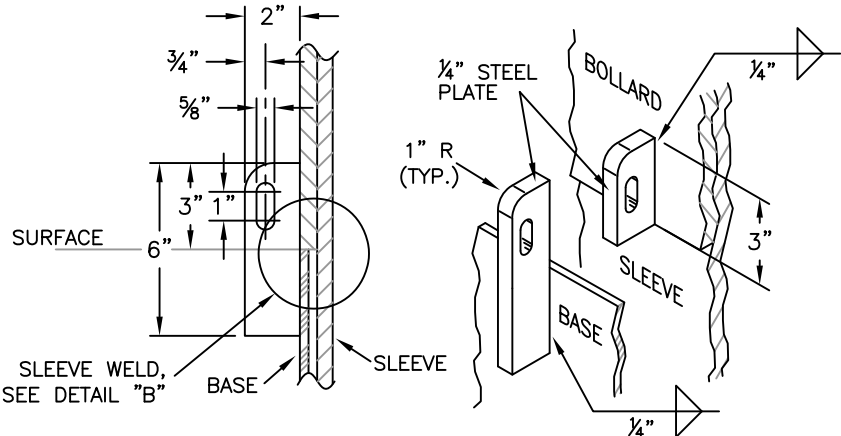
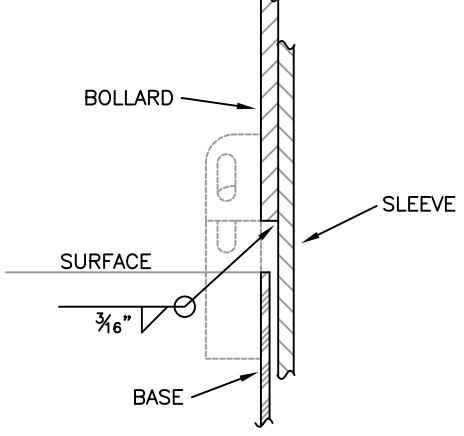


REMOVABLE BOLLARD

PERMANENT BOLLARD



DETAIL "A": LOCKING PLATES




DETAIL "B": SLEEVE WELD

NOTES:

1. ALL BOLLARDS (REMOVABLE AND PERMANENT) SHALL HAVE A FINISHED HEIGHT OF 3'-0".
2. LOCKS FOR REMOVABLE BOLLARDS SHALL BE PURCHASED BY THE CONTRACTOR AND SUPPLIED BY THE ENGINEER.
3. FINISHED BOLLARDS SHALL BE PAINTED WHITE AND AFFIXED WITH TWO BANDS OF APPROVED 3" WIDE WHITE REFLECTIVE TAPE. TAPE BANDS SHALL BE PLACED AT THE TOP OF EACH BOLLARD AND 6" APART (EDGE-EDGE).
4. GRIND SMOOTH ALL METAL EDGES.
5. HOT-DIP GALVANIZE BASE ASSEMBLY AFTER FABRICATION.
6. ALL CONCRETE SHALL BE COMMERCIAL GRADE CONCRETE 3000 P.S.I. (MIN.).
7. ORIENT LOCK ASSEMBLY PARALLEL WITH PEDESTRIAN TRAFFIC.

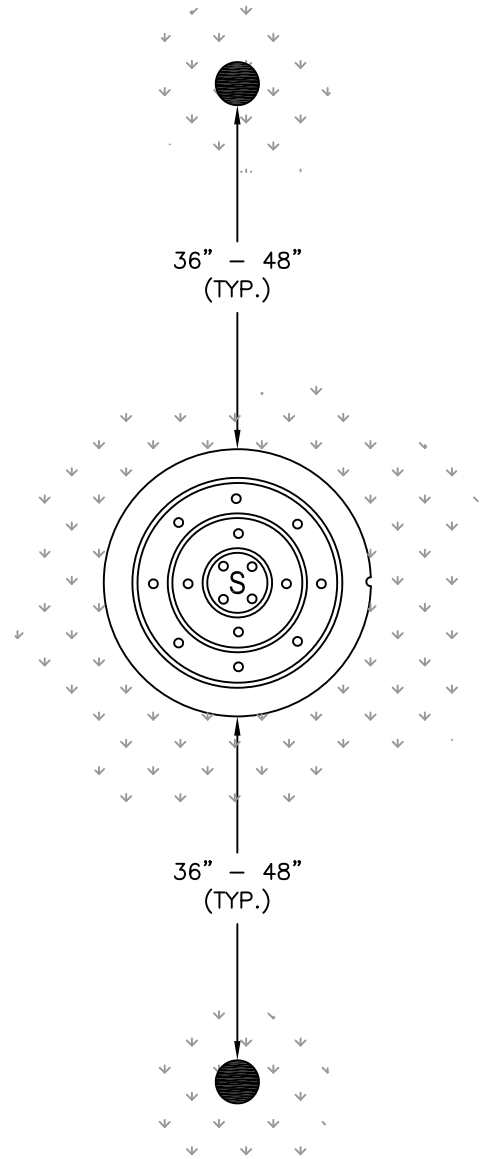
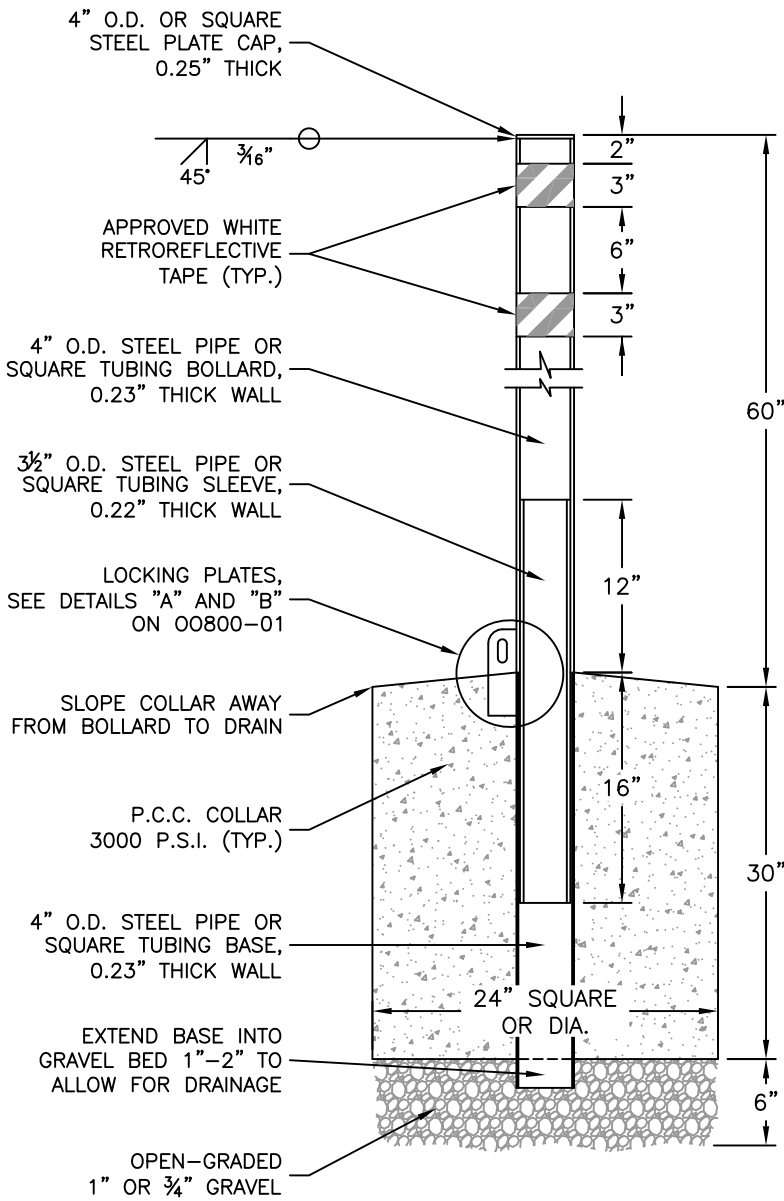
CITY of LEBANON 2021 SUPPLEMENTAL STANDARD DRAWING



APPROVED  
  
 CITY ENGINEER  
 DATE: Dec., 2021

REVISIONS  
 Aug., 2023

BOLLARDS, URBAN  
 INSTALLATION  
 DRAWING NO: 00800-01



**NOTES:**

1. ALL BOLLARDS SHALL HAVE A FINISHED HEIGHT OF 5'-0" UNLESS OTHERWISE SPECIFIED BY THE ENGINEER.
2. LOCKS FOR REMOVABLE BOLLARDS SHALL BE PURCHASED BY THE CONTRACTOR AND SUPPLIED BY THE ENGINEER.
3. FINISHED BOLLARDS SHALL BE PAINTED WHITE AND AFFIXED WITH TWO BANDS OF APPROVED 3" WIDE WHITE RETROREFLECTIVE TAPE. TAPE BANDS SHALL BE PLACED AT THE TOP OF EACH BOLLARD AND 6" APART (EDGE-EDGE) AS SHOWN.
4. GRIND SMOOTH ALL METAL EDGES AND HOT-DIP GALVANIZE BASE ASSEMBLY AFTER FABRICATION.
5. ALL CONCRETE SHALL BE 3000 P.S.I. (MIN.) COMMERCIAL GRADE.
6. POSITION BOLLARDS IN LINE WITH SEWER LINE (IF APPLICABLE) AND AT A UNIFORM DISTANCE FROM THE MANHOLE TO AVOID CONFLICT WITH THE STRUCTURE (36" - 48"). ORIENT LOCK ASSEMBLIES TOWARDS MANHOLE.

**CITY of LEBANON 2021 SUPPLEMENTAL STANDARD DRAWING**



APPROVED

*San [Signature]*

CITY ENGINEER

Dec., 2021

DATE

Aug., 2023

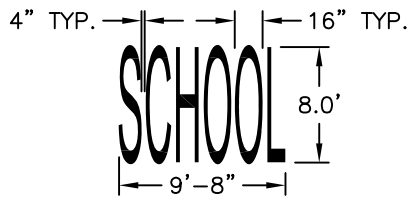
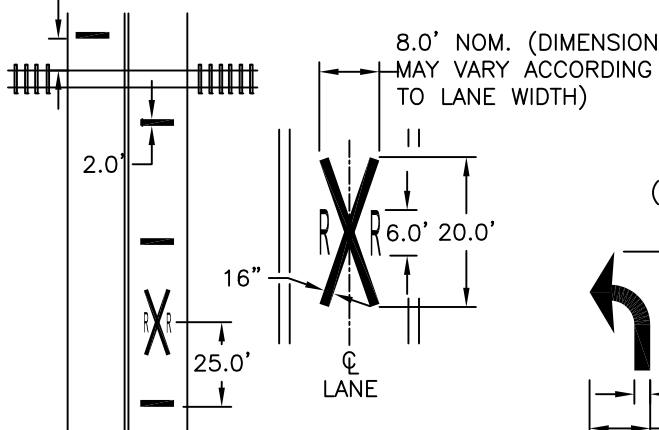
REVISIONS

**BOLLARDS, FIELD  
INSTALLATION**

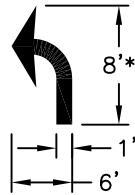
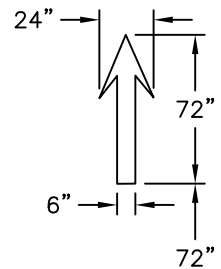
DRAWING NO:

**00800-02**

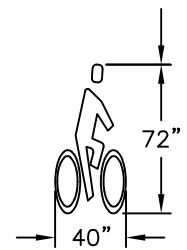
STOP LINE 1.0'  
FROM GATE (IF PRESENT)  
15' FROM NEAREST RAIL



SCHOOL SYMBOL DETAIL  
(REFER TO F.H.W.A. LETTERING GUIDE)



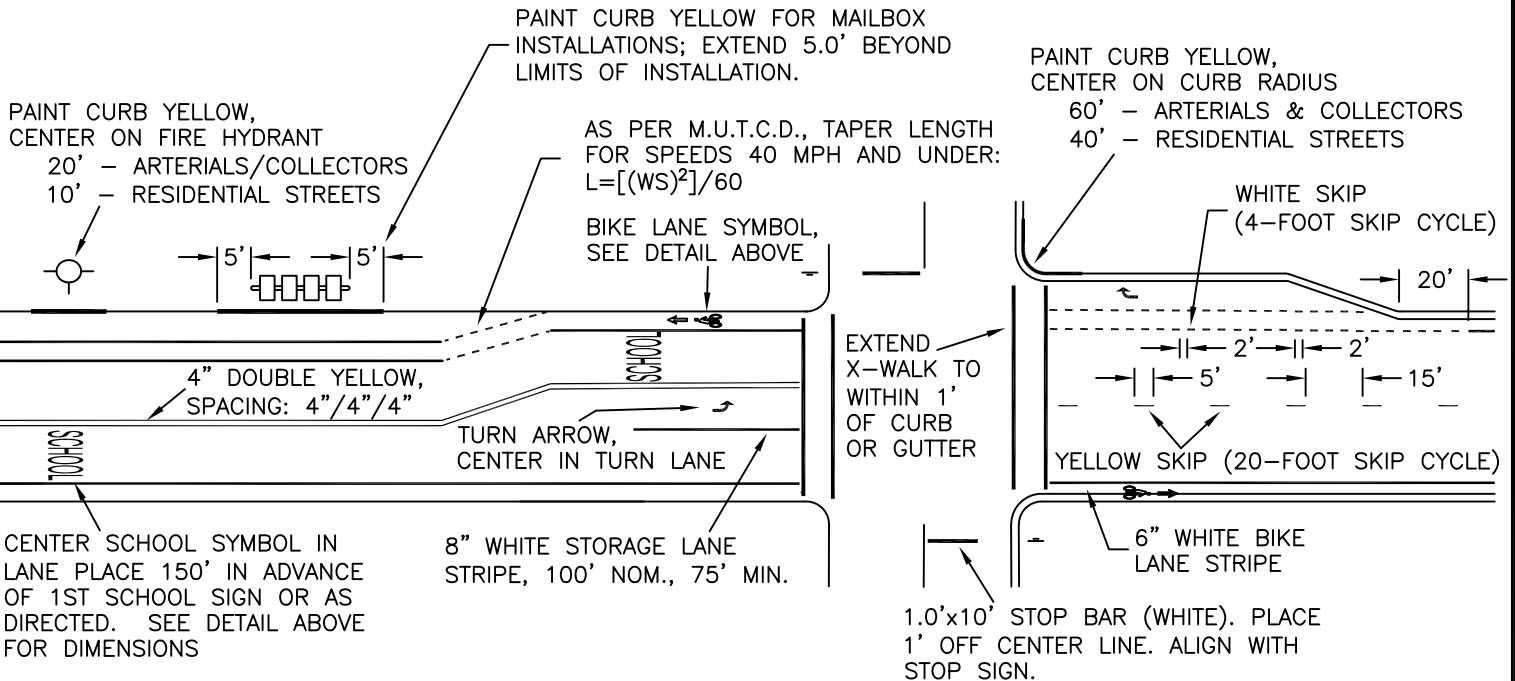
\*STANDARD SIZES MAY BE  
REDUCED UP TO 1/3 FOR  
LOW-SPEED (URBAN)  
CONDITIONS



RR CROSSING PAVEMENT MARKING DETAIL  
(TYPICAL BOTH DIRECTIONS; SEE NOTE 3)

TURN ARROW DETAIL

BIKE SYMBOL DETAIL



NOTES:

1. ALL TURN ARROWS, CROSSWALK BARS, STOP BARS, SCHOOL MARKINGS, BIKE SYMBOLS AND R.R. CROSSING MARKINGS SHALL BE TYPE "B" THERMOPLASTIC.
2. ALL CROSSWALK STRIPING SHALL BE 1.0' WIDE. HIGH-INTENSITY CROSSWALKS SHALL HAVE 2.0' WIDE STRIPES WITH 2.0' GAPS ONLY AT LOCATIONS DESIGNATED BY THE ENGINEER. SEE SUPP. DWG. 00700-08 FOR CROSSWALK WIDTH INFORMATION.
3. RAILROAD CROSSING MARKINGS SHOWN HERE FOR REFERENCE ONLY. MARKINGS SHALL BE IN ACCORDANCE WITH PART 8 OF THE CURRENT M.U.T.C.D.
4. FOR DIMENSION TOLERANCES, SEE SUPP. STD. SPECIFICATION 00850.46.

CITY of LEBANON 2021 SUPPLEMENTAL STANDARD DRAWING



APPROVED

*San Prudhomme*

CITY ENGINEER

Dec., 2021

DATE

Aug., 2023

REVISIONS

TYPICAL  
STRIPING

DRAWING NO:

00800-03