

WARRIOR

1949



W
A
R
R
I
O
R
1949

PUBLISHED BY
ASSOCIATED STUDENT BODY
OF
Lebanon Union High School
Lebanon, Oregon

Contents

FACULTY

CLASS OF '49

UNDERCLASSMEN

MUSIC

ACTIVITIES

SPORTS

FEATURES

SPONSORS

FACULTY



J. W. KING

Degrees:
Pacific University B. A.;
University of Oregon M. A.
Activity:
Superintendent of Schools



A. BURLEIGH CASH

Degrees:
University of Oregon B. A.;
University of Oregon M. A.
in Education.
Activity:
Principal.



E. C. AYERS

Union High School Board
Member, Lacombe Area.



E. H. BOHLE

School Board Member,
District 16.

T. G. BRITTON

School Board Member,
District 16.



LOVEDY BURKHOLDER

Degrees:
Bachelor of Education, Un-
iversity of Oregon.
Subjects:
Art 8, 9, 10, 11, 12.
Activities:
Paletteer's Art Club; Stage-
crafter's Club.



GRACE A. BURNS

Degrees:
University of Oregon B. A.;
University of Denver.
Subjects:
Librarian.
Activities:
Library Club.



LEWIS E. CLARK

Degrees:
Oregon State College of
Education; University of
Oregon Extension; Oregon
State College.
Subjects:
Eighth Grade Science;
Eighth Grade Social Sci-
ence.
Activities:
Eighth Grade Advisor;
Ski Club Advisor; Baseball
Coach; Junior High Bas-
ketball Coach.



CLAUDIA CLEVELAND

Degrees:
Southern Oregon College of Education, Ashland; Oregon State College B. S.; Oklahoma A & M.
Subjects:
Typing.



MARTHA COUNCIL

Degrees:
Oregon State College B. S.; Eastern Oregon College of Education.
Subjects:
Homemaking; English I.
Activities:
Sophomore Class Advisor; Assistant FHA Advisor.

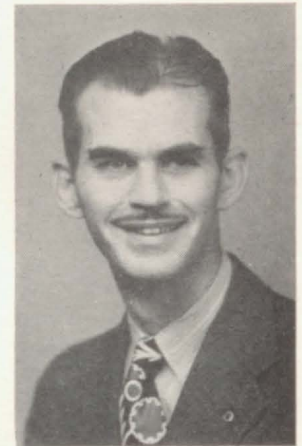
IRENE DICKENS

Degrees:
Northwestern State College, Alva, Oklahoma, B. A.
Subjects:
English I; English III.
Activities:
Junior Class Advisor.



A. A. DODDS

Degrees:
Northwest Missouri State Teachers B. S.; University of Missouri.
Subjects:
T & I.
Activities:
Veteran Coordinator; Visual Aides Advisor; T & I Club Advisor.



LEONARD E. GAINER

Graduate:
V. E. N. D. Graduate Engineer, Hemphill; Diesel Engineering Schools, Seattle, Wash.; Machinist and Mechanic.
Subjects:
Machine Shop Theory and Practice; Acetylene and Electric Welding.
Activities:
Advisor Vocational Machine Shop Club.



ROYAL GARDNER

Degrees:
B. S., I. A. Ed.
Subjects:
Woodwork.

EARL GERFEN

Degrees:
Elmhurst College B. A.; Willamette University
Subjects:
United States History
Activities:
Track Coach; "B" Football Coach; Junior Class Advisor; Lettermen's Club Advisor.



JOYCE GERFEN

Graduate:
Elmhurst College; Oregon College of Education.
Subjects:
Eighth Grade English; Social Science.
Activities:
Eighth Grade Advisor.



KAY KINCAID GREAME

Degrees:
Western Washington College of Education B. A.; Graduate of Southern College of Education Five Year.
Subjects:
English II; Dean of Girls.
Activities:
Girl's League Advisor; Girl's Counsellor.



RAE ARDIS GREENOUGH

Degrees:
Oregon State College B. S.
Subjects:
Science III.
Activities:
Freshman Class Advisor.



LOUELLA HACKETT

Graduate:
Secretarial Training, Salem; Cashier Training, Portland.
Activities:
Mr. Cash's Secretary.



HOWARD HICKCOX

Degrees:
Huron College B. S.; University of Minnesota; Oregon State College.
Subjects:
Chemistry, Physics, Mathematics; Publications.
Activities:
Warrior Advisor; Hi-Light Advisor; Handbook Advisor.

J. H. IRVINE

School Board Member, District 16.



RUTH JANKE

Degrees:
Reed College B. A.; Ellensburg Teachers College.
Subjects:
English I & II.
Activities:
Sophomore Class Advisor.



GLORIA JOHNSON

Degrees:
Pacific University B. A.
Subjects:
Speech and Drama; English III, Spanish II.
Activities:
Junior Class Advisor; Dramatis Personae Advisor.



VERNA LEWIS

Degrees:
University of Oregon B. S.
Subjects:
Biology, World Geography
Activities:
Pep Club Advisor.



EARL LIGGETT

School Board Member,
District U-1.



MARY K. MACLEAN

Degrees:
University of Oregon B. S.
Subjects:
World History
Activities:
Sophomore Class Advisor.

CAROLINE E. MATEJCEK

Graduate:
North Dakota School of
Forestry.
Activities:
Secretary to Superintendent of Schools.



ALBERT F. NEUMAN

Degrees:
Oregon State College B. S.
in Education; Mt. Angel
College; Voss Business Col-
lege in Chicago; General
Extension Division.
Subjects:
Algebra; Latin I & II.
Activities:
School Finances; Latin Club
Advisor.



LAWRENCE F. PAGE

Degrees:
Oregon State College B. S.
Subjects:
Bookkeeping; World Geog-
raphy; Dean of Boys; Head
Football and Basketball
Coach.
Activities:
Advisor for Hi-Y Club.



RULON C. PARHAM

Degrees:
Oregon State College B. S.
Subjects:
Mathematics.
Activities:
Freshman Class Advisor;
Fire Squad Advisor.

HELEN PRICE

Degrees:
Willamette University B. A.,
University of Oregon.
Subjects:
Vocal Music.
Activities:
Glee Club.



DAPHNE SCHAINCK

Degrees:
Oregon State College B.
S.; University of Oregon.
Subjects:
Health and Physical Ed.
Activities:
GAA Advisor.



EDITH SCHIFFERER

Degrees:
Willamette University; Oregon State College B. S.
Subjects:
Home Economics.
Activities:
Freshman Class Advisor; FHA Advisor.



DOROTHY W. SCHILTZ

Degrees:
Ohio Wesleyan B. A., Fifth Year, Master's Equivalent; Graduate Work Columbia University; University of Washington; Oregon State College; University of Oregon; Denver University.
Subjects:
Socio-Economics.
Activities:
Advisor for Try-Y Club.



RUSSELL P. SCOTT

Degrees:
Northern State Teachers College B. S.; University of Montana Graduate Work; Oregon State College M. S.
Subjects:
Drafting; Mech. Drawing; Safety Driving.



ALBERT V. SIMONS

Degrees:
Oregon College of Education.
Subjects:
Eighth Grade Math.
Activities:
Eighth Grade Advisor.

EDITH SMITH

Degrees:
Oregon State College B. S.; Chico State College.
Subjects:
Stenography; Office Procedure.
Activities:
Student Finance Officer; Senior Class Advisor.



VINTON SNYDER

Degrees:
University of Oregon
Subjects:
Grade and High School Bands.



WILLIAM THOMAS

School Board Member, District 16



BERT UDELL

Union High School Board Member, Reed Area.



MURLE R. WELLS

Degrees:
University of Nebraska B. S.
Subjects:
Health and Physical Ed.; Ninth Grade Math.
Activities:
Freshman Class Advisor; Director Intramural Sports.



HAROLD J. WHELAN

Chairman District U-1; School Board Member, District 16.



ELLEN WILSHIRE

Degrees:
University of Oregon B. A.
Subjects:
Senior English.
Activities:
Advisor for Senior Class.



GEORGE VANPELT

Degrees:
University of Oregon B. S.
Subjects:
Health and Physical Ed.
Activities:
Football and Basketball
Assistant Coach.



ELOISE VAN den BIESEN

Degrees:
Montana State College B. S.
Subjects:
Science 3; Health and
Physical Ed.
Activities:
Advisor for GAA.



NANCY KIRKPATRICK

Degrees:
University of Oregon B. A.
in Music; University of Ha-
waii.
Subjects:
Advanced Chorus; Fresh-
man Chorus; Girl's Chorus;
Boy's Chorus.
Activities:
Glee Clubs Advisor.

Student Council

Back Row: Christensen, Powell, Lowe, Anthony, Duncan, Patterson, Abbott, Fryrear, Gallagher, Hunt, Frum, Osterman.
Second Row: Hamilton, Whitmore, Guggisburg, Wilcox, Dodds, Fitzwater, Rose, Alkio, Olson, Waddell, Pearce, Erickson, Drapela.
Front Row: Groves, Fiala, Porter, Temple, Cox, Hewett, Fenner, Hebert, McCracken, Bartels, Carlson.



SENIORS



Class of '49

ALAN FRUM

Football 1, 2, 3, 4; Basketball 1, 2, 3, 4; Baseball 1; Fire Squad 3, 4; Latin Club 3, 4; Ski Club 1, 3, 4; Hi-Y 1, 3, 4; Lettermen's Club 2, 3, 4; Class President 4; Class Vice President 3; Class Representative 1; Latin Club Vice President 3.



JOE ABBOTT

Football 2, 3; Basketball 1, 2, 3, 4; Track 2, 3; Co-Captain 4; Baseball 1, 2; Hi-Y 2, 3, 4; Treasurer 4; Lettermen's Club 2, 3, 4; Library Club President 4; Student Council 4; Hi-Light 4.



LOUISE ALKIO

Girl's League 1, 2, 3, 4; Library Assistant 4; Library Club Representative 4; Dramatis Personae 4; Chorus 1, 2, 3, 4; Senior Play 4.

BETTY ALLEY

Library Club 3; Home Ec. 1, 2; Vice President FHA 3.



HELEN ALLEY

Girl's League 1, 4; Ski Club 1; Library Club 4; Mission Club Officer 2; School Orchestra 2, 3; Glee 3; Annual Staff 3.



DONNA ALM



BOBBY AMES

Home Ec. 1; Girl's League 1, 2, 3, 4; GAA 2, 3, 4; Latin Club 2, 3; Library 3.



CHARLES ARNOLD
T & I 3, 4.



JANET ARNOLD
Home Ec. 1, 4; Girl's
League 2, 3; Latin Club
2, 3; Home Ec. Club 1.

THELMA AUMAN

FHA 1; GAA 1, 2; Tri-Y 2,
3, 4; Drill Team 2, 3; Jun-
ior, Senior Play Assistant
and Make-up 3; Hi-Light 3;
Girl's League 4.



JACK AYERS

Track Manager 2; Hi-Y 3,
4; Secretary 4; Lettermen's
Club 3, 4.



LOUISE BACKMAN

Girl's League 1, 2, 3, 4;
Pep Club 1, 4; Operetta 2;
Tri-Y 4; Girl-of-the-Month
3; Chorus 1, 2, 3; Prom
Committee 3.



DON BAKER

Football 1, 4; Lettermen's
Club 4; Hi-Y 4.

KATHRYN BAILEY



JERRY BARTELS

Football 2, 3, 4; Basket-
ball 3; Baseball 2, 3, 4;
Lettermen's Club 2, 3, 4;
Visual Aides 3, 4; Presi-
dent 4; Student Council 3,
4; Senior Picture Commit-
tee 4; Prom Committee 3;
Stage Crew 3; Intramural
4.



HAROLD BATES

Basketball 3; Baseball 1, 2, 3, 4; Lettermen's Club 2, 3, 4.



ELIZABETH BLAZER (LARKIN)

Pep Club 1, 2, 4; Girl's League 1, 2, 3, 4; Prom Committee 3; Home Ec. Club 1; Freshman Sextette 1.



JODY BLOUNT

Stagecraft 1, 2; Art Club 1, 2.



BILL BOYD

Visual Aides 4.

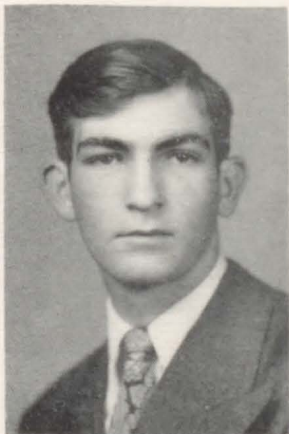
MAXINE BURIAN

Girl's League 1, 2, 3, 4; GAA 1, 2, 3; Drama Club 4.



ELSIE BUSH

Girl's League 1, 2, 3, 4; GAA 1, 2, 3, 4; Tri-Y 4; Yell Leader 3; Library Club 4; Carnival Princess 3.



RUSSELL CALAHAN

Track Manager 3; Latin Club 3, 4; Lettermen's Club 4.



DOROTHY CAMPBELL

Girl's League 1, 2, 3, 4; Representative 3, 4; Home Ec. Club 1; Dramatis Personae 3, 4; Tri-Y 4; Mixed Chorus 2; Girl's Glee 3.



WALLACE CAMPBELL

Baseball 1, 2, 3, 4; Lettermen's Club 2, 3, 4; Palet-
teers Club 2, 3, 4; Stage-
crafters 3, 4; President 3;
Vice President 4; Visual
Aides 4.



BEVERLY CARLSON

Girl's League 1, 2, 3, 4;
Big-Little Sister Chairman
4; Girl-of-the-Month 2; Ski-
Club 1, 4; Drama Club 3,
4; Girl's League Play 3;
Latin Club 3, 4; Tri-Y 4;
President 4; Student Council
4; Home Ec. Club 1;
Prom Committee 3; Senior
Picture Committee 4; Of-
fice 4.

JEAN CARLSON

Ski Club 1, 2, 3, 4; Chorus
1, 2, 3, 4; Freshman Sex-
tette 1; Trio 4; Operetta
2, 3; GAA 1, 2, 3, 4; Sec-
retary 3; Treasurer 4; Girl's
League 1, 2, 3, 4; Girl-of-
the-Month 2; Art Club 2,
3, 4; Representative 3;
Student Council 3; Pep
Club 1, 3, 4; Drama Club
3, 4; Co-Chairman Prom
Decoration 3; Girl's League
Play 3; Art Award 3; Drum
Majorette 1; May Day
Princess 4.



JOAN CARLSON

Pep Club 1, 2, 3, 4; Ski
Club 1, 2, 3, 4; Glee Club
1, 2, 3, 4; Art Club 2, 3,
4; Business Manager 4;
GAA 1, 2, 3, 4; Vice Pres-
ident 4; Girl's League 1,
2, 3, 4; Drama Club 3, 4;
Co-Chairman Prom Decor-
ation 3; Girl's League Play
3; Freshman Sextette 1;
Trio 4; Operetta 2, 3; Girl-
of-the-Month 1; Art Award
3; Majorette 1; Senior
Play 4.



DALE CARTER

Machine Shop Club 3; T
& I 4.



LEONARD CARTER

Track 2; Hi-Y 3, 4; Letter-
men's Club 3, 4; Visual
Aides 4.

CLARENCE CODDINGTON

Sec.-Treas. Machine Shop
Club 4.



PATRICIA CONE

Pep Club 1, 2, 3; Yell
Leader 3; Dramatis Per-
sonae 4; Hi-Y Sweetheart
2; Associate Business Man-
ager 3; Junior Prom Prin-
cess 3.



BEVERLY COWDEN

Girl's League 1, 2, 3; Pep Club 1, 2, 3; Junior Class Play 3; Band 2, 3.



JOE COX

Hi-Y 3, 4; Latin Club 3; Junior Class Play 3; Band 3; Student Body President 4; Drama Club 4; Hi-Y-Girl's League Play 4; Track 3; Senior Play 4.



RICHARD COX

Ski Club 1, 2, 3, 4; Football 4; Lettermen's Club 4; Prom Committee 3; Hi-Light 4; Basketball Intramurals 3, 4; Art Club 2, 3.



KATHLEEN CRUISE

Girl's Glee 1; Mixed Chorus 2; Girl's League 1, 2, 3, 4; T & I Club 3, 4; Sec-Treas. 4; Home Ec. Club 1; Prom Committee 3; Tri-Y 4; GAA 1, 2.

J. D. DAVIS

Track 1, 2, 3; Junior Class Play 3; Glee Club 1.



SALLY DAVIS

Band 1; Secretary 1; Pep Club 2, 3, 4; Class President 1; Home Ec. Club 1; Prom Committee 3; Prom Queen 3; Office 4; Girl's League 1, 2, 3, 4; May Day Princess 4.



RAY DOWNING

Football 1, 2; Band 1, 2, 3; Ski Club 1, 2, 3; Prom Committee 3; Basketball Intramurals 3; May Day Escort 4.



DOUGLAS EDWARDS

Machine Shop Club 4.



CARRIE JOY ERICKSON

Girl's League 1, 2, 3, 4; Sr. Play 4; Girl-of-Month 3; Glee Club 1, 2, 3, 4; Sextette 3, 4; Octette 3, 4; Trio 4; Library Club 4; Tri-Y 4; Song Leader 4; Student Council 4; Prom Committee 3; Drama Club 1; Home Ec. Club 1; Office 4.



JACK EVANS

Football 3, 4; Basketball 1, 2, 3, 4; Captain 4; Baseball 1, 2, 3, 4; Lettermen's Club 1, 2, 3, 4; Class President 1, 2; Chorus 1, 2, 3, 4; Band 1, 2, 3; Visual Aides 4; Operetta 2, 3.

MARY FENNER

Leader's Club 1; Class Treasurer 3; Girl's League 2, 3, 4; Student Body Treasurer 4; Executive Council 4; Student Council 4; Tri-Y 4; Hi-Light 4; T & I 4; May Day Princess 4; Girl-of-the-Month 2, 3; Pep Club 4; Senior Play 4.



ELMER DONALD FERGUSON

Stagecraft 3, 4; Chorus 2, 3, 4.



RICHARD FIALA

Stagecraft President 4; Machine Shop Club 4.



DIXIE LEE FITZWATER

Pep Club 1, 2, 3, 4; Vice President 4; Girl's League 1, 2, 3, 4; Drama Club 3, 4; President 4; Girl's League Play 3; Ski Club 3; Glee Club 1, 2; Hi-Light 3, 4; Associate Editor 3; Editor 4; Tri-Y 4; Class Treasurer 2; Operetta 2; Library Club and Assistant 3.



LYLE FOLTZ

Hi-Y 3, 4; Visual Aides 3, 4; Hi-Light 3, 4; Track 3; Hi-Light Sports Editor 4; Senior Play 4; Fire Squad 4.



ANNA FORBES

Band 1, 2, 3, 4; GAA 1, 2, 3, 4; FHA 4; Home Ec. Club 1, 2; Latin Club 2, 3; Drama Club 4; GAA Sports Manager 4; Tri-Y 4; Girl's League 1, 2, 3, 4.



DOROTHY FORQUER

FHA 1, 2; Girl's League 1, 2, 3, 4; Pep Club 1, 2; Library Club Treasurer 4.



BETTY FRANK

Girl's League 1, 2, 3, 4; GAA 2, 3, 4; Treasurer 3; Business Manager 4; Home Ec. 1; Historian 1; Drama Club 3, 4; Junior Class Play 3; Girl's League Play 4; Girl-of-the-Month 2, 3; Prom Committee 3; Senior Picture Committee 4; Tri-Y 4; Freshman Initiation Committee 4.



ALAN FRUM

Football 1, 2, 3, 4; Basketball 1, 2, 3, 4; Baseball 1; Fire Squad 3, 4; Latin Club 3, 4; Ski Club 1, 3, 4; Hi-Y 1, 3, 4; Lettermen's Club 2, 3, 4; Class President 4; Class Vice President 3; Class Representative 1; Latin Club Vice President 3.



JIM FRYREAR

Football 1, 2, 3, 4; Basketball 2, 3, 4; Lettermen's Club 1, 2, 3, 4; President 4; Ski Club 1, 2, 3, 4; Vice President 3; President 4; Fire Squad 2, 3; Visual Aides 4; Treasurer 4; Hi-Y 4; Prom Committee 3; Senior Picture Committee 4; Band 1, 2, 3, 4; Hi-Light 4; Student Council 4; Senior Play 4.

ALDYTH GABLE

Girl's League 3, 4; Tri-Y 4; Library Club 4.



JOSEPH D. GALARNEAU JR.

Yell Leader 4; Pep Club 4; Latin Club 3, 4; Visual Aides 4; Paletteers Club 3, 4; Intramural Basketball 3, 4.



KENNETH GALLAGHER

Warrior 3, 4; Assistant Editor 3; Editor 4; Football 3, 4; Manager 2; Visual Aides 3, 4; Fire Squad 3, 4; Student Council 4; Lettermen's Club 2, 3, 4; Hi-Light 3, 4; Hi-Y 3, 4; Art Club 2, 3; Vice President 3; Senior Class Pictures 4; Chairman 4; Prom Committee 3; Handbook 4.



HELEN JO GILBERT

Pep Club 1, 2, 3, 4; Ski Club 3, 4; Girl's League 1, 2, 3, 4; Treasurer 3; Pep Club Treasurer 3; Tri Y 4; Chorus 2; Hi-Y Sweetheart 3; Junior Prom Princess 3; May Day Princess 1.



ROCKNE GILL

Ski Club 1, 2, 3, 4; Football 1, 2, 4; Paletteers Club 1, 2; Hi-Y 3, 4; Latin Club 3; Lettermen's Club 4; Prom Decoration Committee 3; Hi-Light Business Manager 4; Senior Play 4; Drama Club 4.



MERYL GROGAN

Girls' League 1, 2, 3; Pep Club 2; Home Ec. Club 2; Band 2, 3; Glee Club 1, 2; GAA 1.

HAROLD GROVE

Track 2, 3, 4; Intramural Basketball 2, 3, 4.



DORIS GROVES

DAR Award 4; Girl's League 1, 2, 3, 4; Vice President 3; Girl-of-the-Month 4; Glee Club 2, 3, 4; Sextette 3; Trio 4; Operetta 2, 3; Pep Club 4; GAA 1, 2, 3, 4; President 4; Ski Club 2, 3, 4; Drama Club 3, 4; Tri-Y 4; Chaplain 4; Magazine Sales Business Manager 4; Junior Play 3; Girl's League Play 4; Prom Committee 3; Student Council 4.



RUTH JOAN HARRIS (MOSS)

Girl's League 1, 2, 3, 4; FHA 3, 4; Home Ec. Club 1, 2; Drama Club 4; T & I 4; Tri-Y 4; Junior Play 3; Usherette; Girl's League Play 3; Library Assistant 4; Library Club 4; Glee Club 1.



RICHARD HAUGHTON

Football 1, 2, 3, 4; Captain 4; Hi-Y 2, 3, 4; Vice President 4; Ski Club 1, 2, 3, 4; Treasurer 4; Lettermen's Club 2, 3, 4; Sec-Treas. 4; Band 3, 4; Junior Class Play 3; Drama Club 3, 4; Hi-Light 4; Senior Play 4.

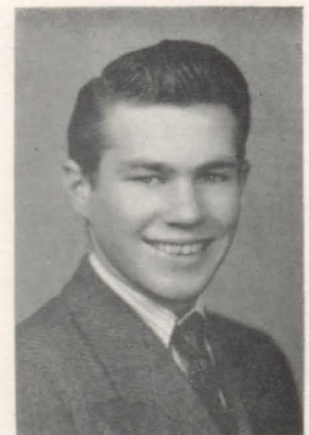
LOY HAWES

Paletteers Club 3; Stagecraft 3; Machine Shop Club 3.



JACK HAYNES

Football 3, 4; Track 2, 3, 4; Captain 2; Hi-Y 4; Lettermen's Club 3, 4; Junior Class Play 3; Drama Club 3, 4; Paletteers Club 2, 3, 4; Band 1; Senior Play 4.



DON HEBERT

Football 2, 3, 4; Basketball 2, 3, 4; Baseball 3, 4; Hi-Y 4; Lettermen's Club 2, 3, 4; Student Body Vice President 4; T & I 4; Hi-Light 3, 4.



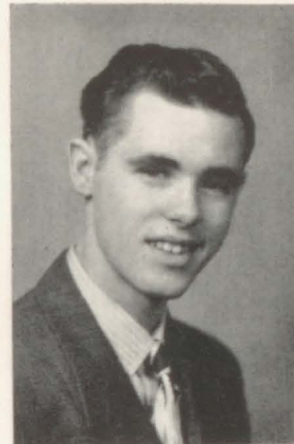
MOLLY HEWETT

Girl's League 1, 2, 3, 4; Representative 2; Ski Club 1, 2, 3, 4; Prom Chairman 3; Drama Club 3, 4; Latin Club 2, 3; Student Body Secretary 4; Senior Play 4.



JUANITA HINES

Girl's League 2, 3, 4; GAA 2, 3, 4; Junior Class Play Committee 3; Spanish Club 3; Girl's Glee 1; Home Ec. Club 1, 2.



MONTY HORTON

Band 1, 2, 3; Chorus 2, 3; Operetta 2, 3; Visual Aides 4; Hi-Y 4; Class Vice President 1.

LYNN C. HOWARD



PAT HUFF



WILLIAM HUNT

Ski Club 1, 2, 3, 4; Drama Club 3, 4; Band 1, 2, 3; Junior Class Play 3; Senior Play 4.



JOHNNY JACOBSON

Football 4; Hi-Y 4; Ski Club 3, 4; Band 1; Art Club 3; Girl's League-Hi-Y Play 4; Latin Club 3; Senior Play 4.



SHIRLEY KEEN

Girl's League 1, 2, 3, 4;
Tri-Y 4; FHA 2, 3; Glee
1, 2, 3; T & I President
4; Office 4.



JERRY KOEPKE

Vocational Machine Shop
Club 4.

JAMES KRAPES

Junior Class Play 3; Drama
Club 3, 4; Art Club 4;
Class Treasurer 1; Senior
Class Play 2; Bus Patrol
1, 2; FFA 1, 2; Senior
Play 4.



MARIE LAMBERT

Auditorium Club 3; FHA 3;
Auditorium Club Play 3;
Red Cross Student Council
Representative 3; Tri-Y 4.



DONALD LANNING

DEAN LEE

Band 1, 2, 3; T & I.



GERTRUDE LEWIS

FHA 4; GAA 3, 4; Girl's
League 2, 3, 4; Girl's
Glee 3.



LOIS LOTT

Girl's League 1, 2, 3, 4;
Girl-of-the-Month 3; Chorus
2, 3; Operetta 2, 3; Tri-Y
4; Prom Committee 3.



RONALD LOTT

Track 3; Machine Shop
Club 4.



GARY MAGEE



FREDDIE McCOWN

Football 4; Glee Club 3,
4; Stage Crafters 3, 4;
Hi-Y 1, 2, 4; Glee Club
2; Freshman Play 1.



DON McGOURTY

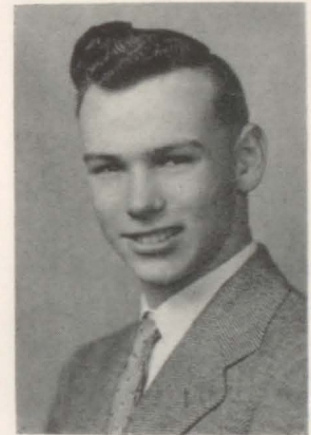
Football 2, 3, 4; Basket-
ball 1, 4; Track 1, 3, 4;
Lettermen's Club 3, 4; Class
Representative 1; Home
Room President 2;

BILL McKINNEY

Band 1, 2, 3; Ski Club
2, 3, 4; Hi-Y 4; Prom Com-
mittee 3; Hi-Light 4; Sen-
ior Ploy 4.



GORDON McPHERSON



ELSIE JEAN McTIMMONDS

Home Ec. Club 1, 2; Libra-
ry Club 3; T & I 4.



BOB McVEIN



EVERETT MESSAL

T & I 2; Track 3; Lettermen's Club 4.



VERNON MOORE

FLORENCE NEAVOLL

Girl's League 1, 2, 3, 4; Home Ec. Club 1, 2, 3.



BILL NELSON

Machine Shop 3; T & I 4; FFA 1; Baseball 1; Track 1.



JOSEPHINE NOFFSINGER

FHA 1, 2; GAA 1; Girl's League 1, 2, 3, 4; Prom Committee 3.



ETHEL OGBIN

GAA.

MERLE O'HEARN



BARBARA OLSON

Pep Club 3, 4; President 4; Ski Club 3, 4; Drama Club 3, 4, Secretary; Tri-Y 4; Girl's League 1, 2, 3, 4; Student Council 4; Freshman Sextette 1; Mixed Chorus 1, 2, 3; Home Ec. Club 1; GAA 2; Office 4; Prom Committee 3.



BUEL OLSON

Football Manager 3; Baseball 2, 3, 4; Lettermen's Club 3, 4; Visual Aides 4; Intramural Basketball 3, 4.



MARLENE OLSON

Spanish Club 3; Speech Club 3; Junior Class Play 3; Pine Needle 3; White Pine 3; Mixed Chorus 2, 3, 4; Glee Club 2; Triple Trio 2; Majorette 1, 2, 3, 4; Head 2, 3, 4; Pep Club 1, 2, 3; Ski Club 4; Drama Club 4; Class Treasurer 4; Girl's League 4; Senior Play 4.



ROY OLSON

Basketball 1, 2, 3; Track 1, 2.



ROBERT OSTERMAN

Football 2, 3; Basketball 1, 2, 3, 4; Hi-Y 3, 4; President 4; Lettermen's Club 2, 3, 4; Treasurer 3; Class Secretary 4; Band 1, 2.

ROBERT A PATTERSON

Basketball 2, 3, 4; Captain 4; Fire Squad 3, 4; Lettermen's Club 2, 3, 4; Hi-Y 3, 4; Class Vice President 4; Hi-Y Play 4; Latin Club 3; Band 1; Hi-Light Editor 4; Class Representative 1, 2; Student Council 1, 2, 4; Football 1, 2.



BARBARA PEARCE

Girl's League 1, 2, 3, 4; Secretary 2; Representative 3; Representative State G. L. Conference 3; President 4; Glee Club 1, 2, 3, 4; Sextette 1, 2; Operetta 2, 3; GAA 1, 2, 3; Ski Club 3, 4; Secretary 4; Pep Club 3, 4; Prom Committee 3; Tri-Y 4; May Day Committee 3; Student Council 4.



STANLEY PORTER

Football 3, 4; Baseball 3, 4; Lettermen's Club 3, 4; Visual Aides 3; Hi-Y 4; Machine Shop Club 3, 4; Secretary 3; President 4; Student Council 4.



LOWELL PRESTON

T & I Club 3, 4.



ALICE ROSE

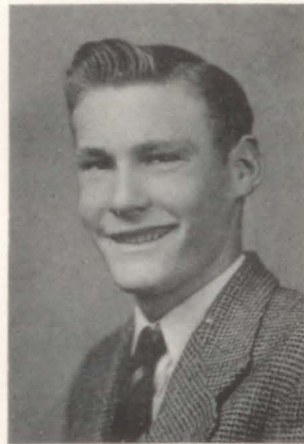
Prom Princess 3; Yell Leader 4; Pep Club 3, 4; Tri-Y 4; Operetta 2, 3; Girl's League 1, 2, 3, 4; Representative 4; Glee Club 2, 3, 4; Ski Club 4; Home Ec. Club 2, 3; GAA 2, 3; Junior Play 3; Student Council 4; Drama Club 4; Senior Play 4; May Day Queen 4.



BETTY SAGERT

DANIEL SEITS

Glee Club 2, 3, 4; Machine Shop Club 4; Intramural Basketball 3, 4; Junior Class Play 3.



JACKIE SIMI

Pep Club 1, 2, 3, 4; Girl's League 1, 2, 3, 4; Representative 1; Ski Club 2; Home Ec. 2; Vice President 2; Hi-Light 4.



BARBARA SMITH

Girl's League 1, 2, 3, 4; Girl-of-the-Year 2; Drama Club 3, 4; Junior Play Business Manager 3; Girl's League Play 4; FHA 1; Tri-Y 4; GAA 2, 3, 4; Senior Play 4.



DOLORES SMITH

Band 2; Student Body Play 3; FHA 2; Class Representative 3; Girl's League 4.

ELAINE SMITH

Girl's League 1, 2, 3, 4; Mixed Chorus 2, 3; Home Ec. 1, 2; GAA 2, 3; T & I 4; Cafeteria 1; Safety Driving 4; Library 4.



WALDO SMITH

Baseball 1, 2, 3; Machine Shop Club 4; Track 4.





JIM SOLLENBERGER

Football 4; Track 2, 3, 4; Captain 4; Lettermen's Club 3, 4; B Squad Football 1, 2; B Squad Basketball 1, 3; Ski Club 4.



DENNIS SPINK

Brind 2; Sports Manager.

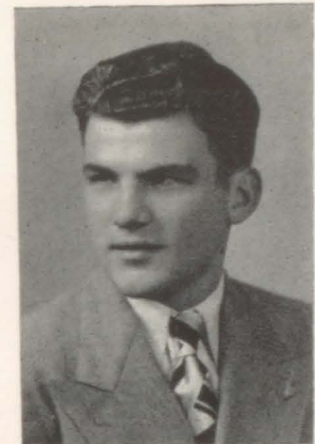
PAT SPIRES

Paletteer's Club 2, 3, 4; FHA 4; Majorette 4; Girl's League 1, 2, 3, 4.



GLENN STARNES

Hi-Y 4; Glee 2, 3; Operetta 2, 3; Intramural Basketball 2, 3.



NORMA STRANGE

Glee Club 1, 2, 3, 4; Operetta 2, 3; Sextet 1, 3, 4; Trio 3, 4; Octet 4; Girl-of-the-Month 2; Girl-of-the-Year 3; Tri-Y 4; Ski Club 4; Drama Club 4; Home Ec. 1; GAA 1, 2; Girl's League 1, 2, 3, 4; Prom Committee 3; Senior Play 4.



VIRGIL STURGEON

Machine Shop Club 4.

MARJORIE SYLVESTER

Home Ec. Club 1; Chorus 1, 2, 3; Library Club 3, 4; T & I 4; Girl's League 1, 2, 3, 4.



GENE TANNER

Basketball 2, 3, 4; Co-Captain 3; Football 2, 3; Lettermen's Club 2, 3, 4; Vice President 3, 4; Hi-Y 3, 4; Student Council 1, 3; Class Representative 1; Vice President 2; President 3; Band 1, 2, 3, 4; Treasurer 2; Hi-Light 4.





DON THOMA

Football 2, 3, 4; Baseball
3, 4; Lettermen's Club 4.



GORDON THOMPSON

Baseball 3.

BETTY TORREY

Girl's League 1, 2, 3, 4;
FHA 4; Tri-Y 4; May Pole
Dance 3; Junior Play Usher
3.



JIM CHARLES TUMA



LILLIE TUMA

Girl's League 1, 2, 3, 4;
Home Ec. 1, 2; T & I 4;
Art 1, 4.



MARY ANN TURNER

Tri-Y 4; Pep Club 2, 3, 4;
Singing Program 1; Ski
Club 3, 4; Chorus 1, 2, 3;
Class Secretary 2; Geor-
gian Chorus 1; Vocal Club
1; May Day Princess
4; Strawberry Fair Queen
Candidate 4.

PAT VINSON



LES WELLS

Football 2, 3, 4; Basketball
2, 3, 4; Baseball 1, 2, 3;
Lettermen's Club 2, 3, 4.





NAOMI WESTFALL

Girl's League 1, 2, 3 4;
Glee 1, 2, 3; Home Ec. Club
1, 2; Library Assistant 4;
Library Club 4.



BOB WHITE

T & I 3, 4; B Squad Bas-
ketball 2, 3.

JOYCE WHITE

Operetta 3; Girl's League
1, 2, 3, 4; Glee 1, 2, 3.



KATHRINE WILCOX

Paletteer's Club 3, 4; Girl-
of-the-Month 3; Girl's
League 1, 2, 3, 4; Latin
Club 3 4; President 4;
Student Council 4; Tri-Y 4;
Senior Picture Committee
4.



MARVIN DEAN ZURCHER

B Squad Football 3; Art
Club 2; Ski Club 2, 3, 4;
Basketball Intramural 2, 3;
Visual Aides 4.



Back Row: Smith, Jacobson, Rose, Haynes, Olson, Fryrear, Carlson, McKinney, Fenner, Foltz, Hewett, Krapes.
 Front Row: Haughton, Hunt, Alkio, Gill, Strange, Cox.

"Smilin' Through"

Thursday, March 31, the Senior class presented the play "Smilin' Through" in the Lebanon high school gym. Gloria Johnson, dramatic teacher, directed the play which proved to be a huge success.

The production staff for the play was as follows: Senior class advisors, Mrs. Edith Smith and Mrs. Ellen Wilshire; promptresses, Dixie Lee Fitzwater and Carrie Joy Erickson; Miss Lovedy Burkholder, faculty advisor; Fred McCown and Elmer Ferguson, chairmen; properties, Molly Hewett, Joan Carlson, Jack Haynes, Aldyth Gabel and Glenn Starnes; publicity, Dixie Lee Fitzwater chairman, Richard Cox, Bill McKinney, Maxine Burian, Bob Patterson, Jean Carlson, Joan Carlson, Jack Haynes, Don Baker, Joe Cox, Rockne Gill and Glenn Starnes; programs and tickets, Marjorie Sylvester, Joyce White, Aldyth Gabel and members of the senior class; make-up, Jean Carlson, Ruth Harris, Betty Torrey, Barbara Pearce, Helen Jo Gilbert, Doris Groves, Lois Lott, Dixie Lee Fitzwater, Thelma Auman, Betty Frank; lights and sound, Joe Abbott, Don McGourty, Dale Carter, James Krapes; usherettes, Sally Davis, Louise Backman, Pat Cone, Jackie Simi, Barbara Olson and Helen Alley.

John Carteret was played by Rockne Gill in the opening scene and by Joe Cox in the flashback; Dr. Owen Harding was played by Richard Haughton and Bill McKinney; Ellen, the maid, Barbara Smith and Marlene Olson; Kathleen Dunganon by Louise Alkio; Willie Ainley by Johnny Jacobson; Kenneth Wayne, Bill Hunt; Jeremiah Wayne, Jim Fryrear; Mary Clare, Alice Rose; Moonyeen Clare, Norma Strange; first man, James Krapes; second man, Lyle Foltz; third man, Jack Haynes; first woman, Molly Hewett; second woman, Mary Fenner; third woman, Joan Carlson; Postman, Jack Haynes.

Senior Class History

In 1945 the present graduating class entered Lebanon high school with a membership of 160 students. These 160 stalwart young ladies and gentlemen withstood the horrible "tortures" of initiation and lived to torture a few freshmen themselves in their junior and senior years.

With Sally Davis at the helm, Monty Horton second-in-command, Pat Christian keeping the log, Pat Cone handling the finances and Gene "Unk" Tanner as representative, the freshman ship sailed along very smoothly.

The first "treasure" that was sought was the football "L." Jim Fryrear was the only member of the crew to achieve this feat.

In basketball several members of the crew were able to scratch the surface and they came up with a year's experience on the "B" squad. They were Jerry Bartels, Bob Osterman, Jim Fryrear, Gene Tanner, Bob Patterson, Dick Haughton, Joe Abbott, Don Hebert and Jim Sollenberger.

That year nine crew members made the fleet band. They were Sally Davis, James Fryrear, Monty Horton, Gene Tanner, Bill McKinney, Bob Osterman, John Jacobson, Jackie Simi and Bob Patterson.

There were 173 students on the second cruise. The officers for this trip were Jack Evans, captain; Gene Tanner, second-in-command; Mary Ann Turner kept the log, Dixie Lee Fitzwater handled the "moola" and Molly Hewett was the representative. The "Good Ship '49" sailed along smoothly this trip, with Don Hebert, Gene Tanner, Alan Frum, Jim Fryrear, Jerry Bartels, Al Thexton, Dick Haughton and Wallace Campbell earning letters in football. The managers were even sophomores—Ken Gallagher and Joe Abbott.

In basketball the '49ers placed six members on the District Seven champion team. Jack Evans, Bob Osterman, Gene Tanner, Bob Patterson, Jim Fryrear and Don Hebert were the lucky boys. Joe Abbott, Harold Bates, Jerry Bartels, Jack Evans, Percy Nordstrand, Al Thexton and Les Wells were the baseball lettermen. And so ended the second cruise of the "Good Ship '49."

The third scholastic cruise of the "Good Ship '49" was captained by Gene Tanner. Alan Frum was his first mate, Pat Cone the secretary and Mary Fenner treasurer.

With "June Mad," the junior class play, helping to supply the collateral, and Molly Hewett, a little girl with a large determination, as chairman, the Junior Prom "Scheherazade" was a brilliant success.

Helen Jo Gilbert and Jim Fryrear received the honors of being selected Hi-Y Sweetheart and Class Clown. Helen Jo was the Hi-Y Sweetheart, of course.

The Junior class had just "oodles" of lettermen that year, who were Jim Fryrear, Don Hebert, Jerry Bartels, Dick Haughton, Wallace Campbell, Alan Frum, Joe Abbott, Claire Cotter, Jack Haynes, Les Wells, Bob Osterman, Jack Evans, Don McGourty, Gene Tanner, Bob Patterson, Stan Porter, Harold Bates, Monte Bean and Jim Sollenberger. Quite a few of these boys lettered in more than one sport.

The fourth and last cruise of the "49ers" was the most eventful trip of all. The activities where all the seniors took part were few, but the seniors made the most of them.

The football squad consisted largely of seniors, as did the basketball team. The seniors were also very prominent in track and baseball. In football, Dick Haughton was chosen to participate in the Shrine All-Star game held in Portland annually.

Three members of the basketball squad were awarded a spot on the District All-Star team. They were Gene Tanner, Jack Evans and Bob Patterson. Jack was also considered by most people as the best basketball player to hit this town. This includes everybody!

Harold Bates was the most outstanding on the baseball team.

Several members of the crew were in the band and glee clubs.

June 10 the class of '49 walked into the auditorium for the last time as students of Lebanon Union High School.

Thus ends this short but eventful history of the class of '49.



SENIORS



CLASS of '49



CLASSES



Junior Class



DICK DUNCAN
President

Junior Class officers for 1948-49 were: Dick Duncan, president; Gloria Logan, vice president; Maxine Alley, secretary, and Jackie Whitmore, treasurer. Faculty advisors were: Miss Gloria Johnson, Mr. Earl Gerfen and Miss Irene Dickens.

The Junior Class this year, under the direction of Miss Gloria Johnson, presented the play "Inner Willie" on January 13 to secure money for the Junior Prom. "Saturday Night in Central Park" was the theme. Committee chairmen were: Jane Slocum, prom; Mary Waddell, decoration; Dewanda Hamilton, theme; Bruce Howe, princess selection; Joan Davis, invitations; Susie Washa, publicity; Sharon Rhodes, program; Betty Schackman, refreshments, and Jack Powell, props.

The Junior Class was very fortunate in having a large number of athletes in its ranks. Mearyle Chriseensen was the only junior to play on the varsity basketball team at the tournament. Gene Beck, Maynard Kirkelie and Jack Michelson received numerals for "B" basketball. Glen Spence, Gene Beck and Ralph Voss lettered in baseball and Dick Duncan, Dale Pracht, Mearyle Christensen, Lloyd Glaus and Ralph Miller lettered in track.

31

"Inner Willie"

Back Row: Drapela, Davis, Lebahn, Edwards, Birch.
Second Row: Johnson, Young, Samla.
Front Row: Russell, Liggett, Parsons.





Junior Girls

BACK ROW: Guggisberg, Whitmore, Waddell, Parsons, Liggett, Lowe, Sommers, Lewis, Logan, Roe, Slocum, Heyne.

FIFTH ROW: Francis, Dixon, Wagner, Hammett, Cruise, Wilson, Arnold, Murphy, Modderman, Tampke, Greer.

FOURTH ROW: Russell, Bächtel, Bennett, Schackman, M. Rous, York, Stevens, Hamilton, Parks, Hake, Kino, Williams.

THIRD ROW: Lott, Postle, Ostrom, J. Weller, Pratt, W. Weller, Bowers, S. Farquer, Plymale, Merchant, Alley, E. Simmons.

SECOND ROW: Willis, Mason, D. Miller, Rhodes, J. Davis, Lebahn, Kampstra, Bailey, A. Rous, McJunkin, Rowell, Nieman, McEwan, Hanson.

FRONT ROW: Glaser, Myers, Samla, Canaga, Clendenen, Washa, Hickey, J. Miller, M. Carter, Johnson, Chartraw, Mastenbrook, Watkins, Workman, B. Davis.

Junior Boys

BACK ROW: J. Powell, Crossan, G. Powell, Steckley, Voss, Swanson, Kirkelie, Pracht, Baca.
FIFTH ROW: Howe, Brannon, Baldwin, Herron, Drapela, Hauxwell, Anthony, Goodwin, Fleming.
FOURTH ROW: Carter, Spence, Frum, Young, Warnke, Howard, Pruitt, Christensen, Miller, Speasl.
THIRD ROW: Birch, Gray, Price, Hersom, Lucas, Van Vleet, Lee, Beck, Glaus, Zehr, Leach.
SECOND ROW: Lundholm, Temple, Duncan, Michelson, Moore, Eidson, Klavano, Waltenburg, Swink, Canaga, Eidson.
FRONT ROW: Sanderson, Pulliam, Edwards, Carper, Train, Wilson, Ball, Phelps, Simms.





JUNIOR CLASS



Sophomore Class



BOB CHRISTENSEN
President

This year's sophomore class was a trifle ahead of the other three classes, because at the beginning of the fall term they already had their officers for the year 1948-49. In the last meeting of the class during their freshman year they elected their new officers. They were: Robert Christensen, president; Sammy Gilbert, vice president; Earletta Saxton, secretary; Dawn Neuschwander, treasurer; Dick Nelson, class representative to the student council, and Dick Chamberlain, sergeant-at-arms.

Advisors for the class were Miss Mary MacLean, Mrs. Ruth Janke and Mr. George Van Pelt.

The social season was fairly active with a class skating party, held in the early fall, which had a very good attendance,, and a party with dancing and playing games held in the spring. The skating party was located at the Lebanon Skating Rink and the dancing party was held in the high school cafeteria.

Every year the GAA sponsors a very entertaining carnival, held usually some time in the spring. Each class sends a clown to try and gain the great and highly honorable title of "King Clown." Sometimes complications arise when one or two classes decide on a girl to be their class clown. But somehow all these minor difficulties are brushed aside and a mighty "King Clown" is chosen. The sophomores chose a girl for their clown, Carolyn Landy. Competing against Carolyn were Marlene Olson, senior clown; Dick Brannon, junior clown; Clarence Primosing, freshman clown, and Johnny Duncley, eighth grade clown.

Several members of the class ran a slingshot booth at the carnival. The dividends helped to raise the treasury considerably.

The sophomores centered their class assembly around the "Gay Nineties." A barber shop quartet was featured and the fellows who sang in it were Wally DeKuyper, Darrel Carlson, Bob Christensen and Bob Hinman. A very spirited reading was offered by Dick Chamberlain.

There are 11 sophomore girls in the Pep Club. This is one more than tradition requires. These girls are Ardith Benz, Marlene Shartel, Mary Ann Herron, Shirley O'Brien, Dawn Neuschwander, Barbara Lott, Leona Neustel, Beverly Canoy, Betty Ann Lindley, Earletta Saxton and Jessica Simmons.

The "B" squad yell leaders are all sophomores this year. They were Leona Neustel, Barbara Lott, Shirley O'Brien, Dick Nelson and Buddy Weaver.

In the different divisions of sports, there are quite a few up and coming young athletes. In baseball Rodney Bean, Bill Andres and Gene Keene participated very well.

Jim Fitzwater, Tommy Summers, Sammy Gilbert, Jim Wilcox, Bob Christensen and Kenneth LaFond had very fine records in track. In football there were Bill Andres, Wally DeKuyper, Tom Summers, Dean Smith, Darrel Carlson, Bob Hinman, Bob Monroe, Jim Lewis, Anthony Hummel and Keith Neidert. The "B" squad basketball team had Tom Summers, Bob Hinman, Wayne Holzfuss, Wally DeKuyper and Sam Gilbert.

The tumbling squad for this year had three sophomore members. They were: Phyllis Simmons, Jessica Simmons and Phyllis Sprague.

On the Hi-Light staff there were two sophomores, Gwen Hills and Wayne Holzfuss. One wrote on general school news and the other wrote on latest sport items.

In the different divisions in Glee, Johanna Smith, Peggy Graham, Wally DeKuyper, Gene Keene and Bud Weaver succeeded in belonging to the advanced glee.

Girls belonging to Girl's Chorus were Joanne Bilyeu, Beverly Davis, Kaye Breeden, LaVern Root, Jerene Strange, Patty Ruth, Patsy Burr, Dawn Neuschwander, Kay Ross, Patsy Morris, Betty Hammock, Arlene Conner, Joan Baker, Norma Auman, Leona Neustel, Elaine Masden, Donna Rice, Lorraine Ferguson, Joyce Ensley, Beverly Dawner, Dorc Kennedy, Viola Hines, Wanda Burge, Betty Fuller, Eilene Meyer and Charlotte Welch.

In advanced band, under the direction of Mr. Snyder, Phyllis Sprague, Bob Christensen and Norma Carrol have succeeded in being a member for two years or more.



Sophomore Girls

BACK ROW: Hills, Landing, Strange, Ross, Saxton, Neuschwander, Canoy, Burge, Burr, Ruth, Nichols, Fort. Preston.
 SIXTH ROW: Payne, Lott, Gott, Bonslaugh, Rice, O'Brien, Pearson, Graham, Heath, Root, Jordan, Knox, J. Simmons, P. Simmons, Rossow.
 FIFTH ROW: Baldwin, Roberts, Train, Suing, Smith, Cray, Rucker, McCoy, Connet, Masden, Hines, Kennedy,
 FOURTH ROW: Herron, Hochgraef, Bremer, Groves, Baldwin, Baldwin, Sprague, Auman, Lindley, Perry,
 THIRD ROW: Lanning, Willcoxon, Davis, Morris, Wallace, Pinkal, Lindsay, Hammock, Conner, Marsh, Mohoff, Bilyeu.
 SECOND ROW: Burrell, Neustel, Benz, Shartel, Ludtke, Meyer, Sorenson, Welsh, Presley, Greer, Durst, Simpson, Baker, Ensley.
 FRONT ROW: Dawner, Barnes, Fuller, Phillips, Carroll.

Sophomore Boys

BACK ROW: Fitzwater, Holzfuss, Lambert, R. Andres, B. Andres, Canaga, Bean, Keen, Beard, Brewster, DeKuyper.
FIFTH ROW: Brown, Peoples, LaFond, Parsons, Wilcox, Gibbs, Urban, Summers, Swanson, Mason, Miller.
FOURTH ROW: McVay, Fleming, Hawes, Blacklaw, Baker, Carlson, Christensen, Van Atta, Smith, Gilbert.
THIRD ROW: Garrett, Monroe, Torrey, White, Baca, Chamberlain, Lewis, Nelson, Ethers, Tucker, Hinman, Niedert, Hummel.
SECOND ROW: White, Blake, Hurst, Smith, Miller, Colvin, Weaver, Schmidt, Berry, Gorman, L. Swanson, Richards.
FRONTROW. Schaefer, Nichols, Larson, Hawes, Crenshaw, Rhoades, Cave, Hodges, Fields, Thoma, Comber.





CLASS
of '51



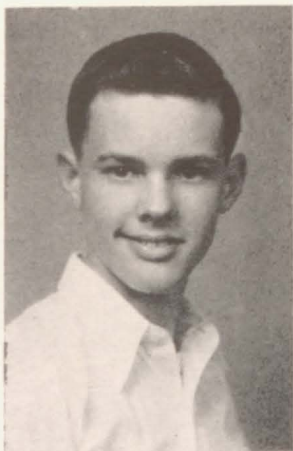
LAVERNE



SOPHOMORES



Freshman Class



JERRY HAMILTON
President

The Freshman class has had a very successful year under the leadership of their advisors, Mrs. Rae Greenough, Miss Edith Schifferer and Mr. Rulon Parham.

This year the Freshman class had the largest enrollment in the school with 215 students.

Their first class meeting was held September 29 for the election of officers. They are as follows: Jerry Hamilton, president; Deloris Welch, vice president; Agnes Backman, secretary; Johnny Stolsig, treasurer, and Bob McCracken, student council representative.

Initiation Day, held October 8, proved to be very successful in spite of the drizzle that fell throughout the day.

The first class party of the year was held in the gymnasium during the first of November. It was a get-acquainted party to make each student feel at home and as if he belonged in the class. It was very successful and enjoyed by all.

Class dues were collected and Christmas presents were given to the advisors.

A very successful class skating party was held in the local Lebanon Rink Jan. 25.

Yell leaders chosen from the Freshman class to represent the junior high basketball squad were Lorraine Baldwin, Agnes Backman and Dennis Olson.

Jerry Hamilton, Jim Whitmore and Ernie Kirkelie were fortunate enough to make the "B" squad basketball team this year. Wally Mitchell succeeded in making the "A" squad in football, a privilege for any freshman.

Eight girls were chosen for their energy and pep to represent our school and the Freshman class at the football and basketball games. They were: Lorraine Baldwin, Carrel Byerley, Ilene Daily, Joyce Bateson, Dorothy Frank, Cynthia Rust, Alice Schmidt and Donna Jean Netland. Carrel Byerley moved to Albany the latter part of the year.

The freshman assembly was held January 17 and received much praise for the humorous opening skit, featuring Bob McCracken, Dean Beck, Larry Moynihan and Jimmy Jacobson. The sextet followed the skit, singing two songs. Richie Osburn sang "On A Slow Boat to China." Deloris Welch and Betty Doggett sang "My Happiness." Bob McCracken presented a humorous oration. Barbara Gamberg played a piano solo. Master of ceremonies was Jerry Hamilton.

Many freshmen have taken part in the music field this year. Louise Christian, Shirley Thexton, Barbara Gamberg, Rita Kenyon, Alice Johnson, Bob Trigg and Gene Stewart are members of the advanced band. Many others are members of the beginners' band.

There are a large number of freshmen students in the advanced chorus and also in the girls' chorus, but only a small percent in the beginners' chorus. These glee clubs did very well under the direction of Mrs. Helen Price during the first semester and Miss Nancy Kirkpatrick the second semester.

The freshman sextet has really made a name for itself by singing at many public occasions. The girls in this sextet are: Ilene Daily, Deloris Welch, Betty Doggett, June Haskins, Marilyn Haskins and May Louise McTimmonds.

Last class party of the year was a semi-formal dance held in the school cafeteria on May 14. The decorations and entertainment were enjoyed by all. It will be looked back upon as one of the most outstanding events of the year.

The Freshman class sponsored one all-school dance after a basketball game that proved quite successful. They also sponsored a very successful ring toss game at the Girls' Athletic Association Carnival which provided prizes and entertainment for all. They also had a hot dog stand at the May Day Festival.

Clarence Primosing represented the Freshman class as clown at the GAA Carnival.

The Freshman class is looking forward to many more successful years in LUHS.



Freshman Girls

BACK ROW: Dobson, V. Whitmore, Lee, A. Johnson, Thexton, Christian, Dillon, Anthony, Conner, B. Modderman, Simpson, Byerley.
SIXTH ROW: Hinthorn, Ford, Ames, Miller, Fetter, Rust, Crossan, Williams, M. Haskin, Baker, Kenyon, Macon.
FIFTH ROW: Davis, Surry, Dykstra, Frame, Gill, Muller, Clark, G. Modderman, Stepp, J. Haskin, Wilcox Van Vleet.
FOURTH ROW: Robeson, Quinton, Whiteis, Childs, Hoelsing, Zolnowsky, Stotz, Gamberg, Dennis, Steel, Alexy, Smith.
THIRD ROW: Harwood, Raines, Skogas, Folsom, Brown, Huff, Shaw, Witzel, Bateson, Schmidt, Mulvany, Carroll, Collins.
SECOND ROW: Drake, Kruse, Murphy, Felton, Daily, Backman, Baldwin, Welch, Strange, Lewis, Farmer, Bennett, Doggett, Lane, Wheaton.
FRONT ROW: Frank, Warwick, Netland, Peoples, Sparks, Otta, Downer, Forbes, Jordan, Andreason, Looney, Young, McTimmonds.

Freshman Boys

BACK ROW: Stevens, Gunderson, McCracken, McCormick, Guinn, Heyne, Shaver, Nesbitt, Moseley, K. Campbell.

FOURTH ROW: Pierce, Campbell, Weist, Ackeret, Duren, Trabont, Hayes, Huff, Temple, Freeman, Moynihan.

THIRD ROW: Calkins, Simmons, Richards, Huston, Southworth, Baggett, Stolsig, Trigg, Jacobson, Witber, Kirkelie, Klavano, Ford, Glaus, Collins, Humphreys, Neuschwander, Rose, L. Yoder, Severson, Spencer, Freeman, E. Thompson, Mobley, Hibbert, Hamilton.

SECOND ROW: Canaga, Wilson, Aplet, Barber, Cooley, Judd, D. Thompson, Hassenger, Donovan, Gilmore, Jones, Benshoof, Harwood, (Unknown), Brocksen, Carroll, Luton, Price, Anderson, Simi, D. Brown, L. Brown, McCready, Lindsay, Dart, Reed, Osburn, Moore, Whitmore.

FRONT ROW: Ammon, Young, Haggard, Billings, L. Yoder, Calph, Christensen, Stewart, J. Brown, Swanson, Beck, Primosing, Sturgeon, Griffith, Olson, Christensen, Gott, Fite, Mitchell, Zurcher, Clark, Swanson, D. Ammon, Cox, Baertlein, Houser, Edmonds.





FROSH



Eighth Grade



NATHAN LOWE
President

On September 20, 120 eighth grade students entered Lebanon Union High School for the school year 1948-49.

After the first several weeks of school, a class meeting was held for the purpose of selecting officers for the year. Those elected were: Nathan Lowe, president; Burl Lott, vice president; Treva Kennedy secretary, and Roger Howard, treasurer. Later Treva Kennedy moved and Kathrynne Davis was elected to take her place as secretary.

Some students tried out for yell leading for the eighth and ninth grade basketball teams. Those chosen from the eighth grade were Jo Ellen Leach and Jack Ward. Those chosen from the ninth grade were Agnes Backman, Lorraine Baldwin and Dennis Olson. Many boys went out for the basketball team and the team had many victories.

In October the first party of the year was held. It was a Hallowe'en party and some students wore costumes. The students danced and played games. In December a Christmas party was held in the gym. Gifts were exchanged and a good time was had by all.

To earn funds for the class treasury, some students sold coke and ice cream bars at a basketball game.

On February 18 the eighth grade class put on an assembly. The master of ceremonies was Howard Kilmer. The program consisted of songs, a skit, accordion duets and other features. In March a skating party was held and everyone had a grand time.

The eighth grade students had a booth at the GAA Carnival. The booth they had was the fish pond. Johnnie Dunckley was elected class clown for the GAA Carnival. Johnnie received the most votes at the Carnival and was crowned King of Clowns.

On May Day some students were chosen by the teachers to guide new eighth grade students from the country and other schools and help them register. Those chosen were Pat Dodds, Kathrynne Davis, Louise Kimes, Carol Wilshire, Shirley Vehrs, Maxine Goodwin, Nathan Lowe, Leslie Beaton, Bob Caldwell, Roger Howard, Burl Lott and Arthur Fuller.

Some students of the class were chosen to make and sell corsages. Others brought homemade fudge and sold it on May Day.

There was an eighth grade track meet with eighth graders from different schools competing on May Day.

On May 13 the last party of the year was held. It was a dancing party. Students danced and played games. Refreshments were served. It was a very successful party.

The eighth grade class has been very successful in its activities and wishes to thank its advisors, Mrs. Earl Gerfen, Mr. Lewis Clark, and Mr. George Simons for all the wonderful help they gave the class during the year.

The eighth grade is looking forward to a very successful year as freshmen.



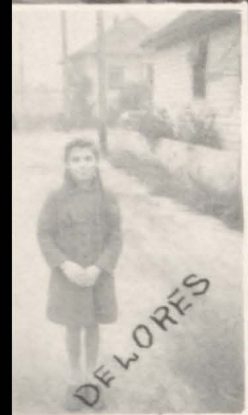
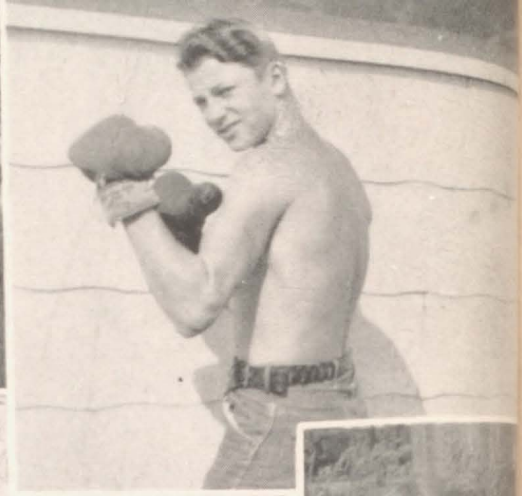
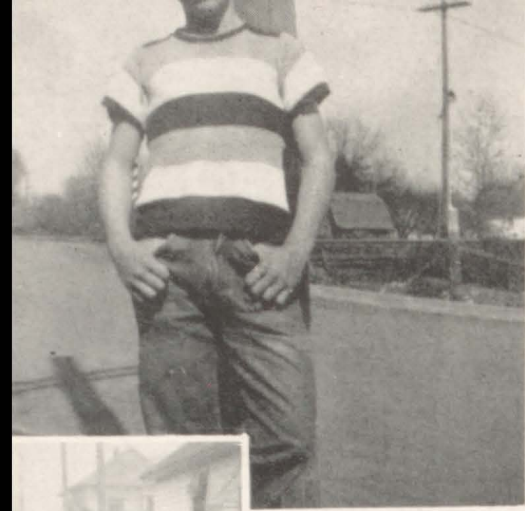
Eighth Girls

BACK ROW: Campbell, Byerley, Willis, Kidwiler, Gunderson, Culbertson, Miles, Grimes, Dart, Whitten, Pearl.
FOURTH ROW: Grove, M. Swanson, Hankins, Stryker, Richter, Downing, Meisner, Slayton, Leach, Goodwin, Van Vleet, Johnson.
THIRD ROW: Larson, Woods, Dickson, Furlong, Farmer, Dodds, Workman, Knapp, Coddington, Woods, Tewalt.
SECOND ROW: Cox, Housen, Erner, Weaver, Connet, Reed, Chandler, Thompson, Lucas, J. Davis, Mitchell, Beach.
FRONT ROW: Speas, Dennis, Swanson, Vehrs, Powell, Gilson, Baldwin, Moseley, Cobat, Kimes, K. Davis, Humphreys, Brownlee.

Eighth Boys

BACK ROW: Ruth, Fox, Lowe, Chamberlain, Shewey, Standley, Phelps, Hainz, Gunderson, Forbes.
 FOURTH ROW: Kwallier, Kilmer, McVay, Richards, Burian, Lott, Anderson, Drapela, Howard.
 THIRD ROW: Zurcher, Ohmacht, Morehead, Malick, Waltenburg, Martin, Saxton, Cruise, Caldwell.
 SECOND ROW: Albee, Fuller, Schaefer, Sjolander, Dunkley, Ward, Swanson, Chapman, Cole, Barnes.
 FRONT ROW: Wise, Fenner, Buck, Jensen, LaFond, Yancy, Standley, Beaton, Wells, Chilcote, Shank, Fiala.





DELORES



MARILYN



Joyce



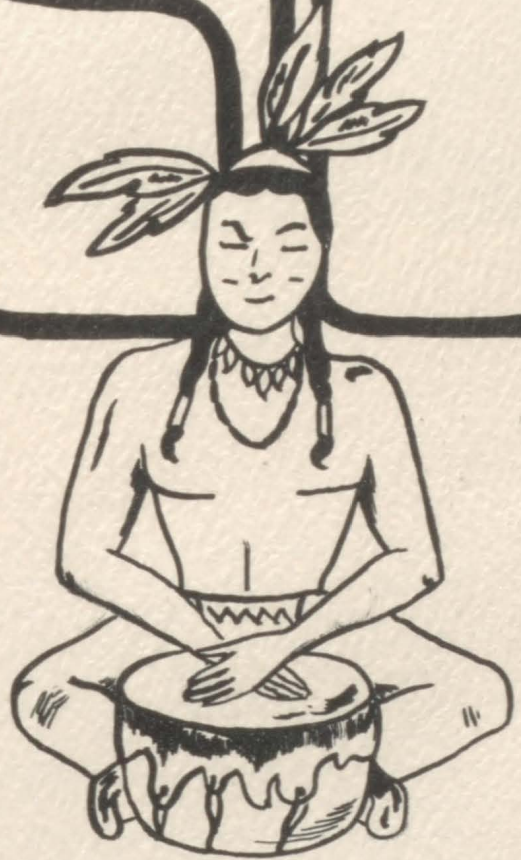
Luan



GRADE



MUSIC





Back Row: Canaga, Lee, Drapela, Kirkelie, Christensen, Christian, Parks.
 Fourth Row: Lundholm, Frum, Trigg, Birch, Swink, Phelps, Haughton, Stevens, Aplet.
 Third Row: Bechtel, Davis, Tampke, Muller, Sprague, Forbes, Carrol, Lucas, Stewart, Malick.
 Second Row: Mr. Snyder, Gamberg, McEwan, Forbes, Plymale, Kenyon, Hersom.
 First Row: Thexton, Wilson, Johnson, Grogan, York, Magee, Richards.
 Kneeling: Dobson, Ludtke.

Band



GENE TANNER
 President

Lebanon's high school band, which has been directed by Mr. Vinton Snyder for the past three years, has become indispensable to the school it represents. Band members have shown their musical ability by competing in many contests, and have received "Superior" or "I" ratings for many years.

This year at the Willamette Valley contest at Albany they received another "Superior" or "I" rating which entitled them to represent this district at Klamath Falls. The contest numbers were "Sousa's Triumphant," "Two Mood" and "Thendara Overture." The five soloists who participated in contests were Dolph Lundholm, cornet solo, I rating; Caryl Wilson, clarinet solo, II rating; Wesley Osborn, alto saxophone solo, II rating; Faye Parks, piano solo, II rating; Arlo Lee, baritone solo, II rating. The band also had a saxophone and a clarinet quartet which participated in the contest and both received a II rating. Members of the saxophone quartet were Thelma Bechtel,

Wesley Osborn, Phyliss Sprague and Joyce Davis. In the clarinet quartet were Effie York, Caryl Wilson, Shirley Thexton and Barbara Gamberg.

The band has played at football and basketball games, and combination concerts with the vocal choruses have been given during the past year. The band also gave a Spring Concert which was presented on May 11.

The band represented Lebanon at the Newport Crab Festival and made a very impressive showing. They made another public appearance at the Strawberry Fair, marching in the parade and playing in the mass band concert that night.



Back Row: Bilyeu, Downer, Fuller, Surry, Root, Wheaton, Burrell, Young, Whiteis, Preston, Cruise.
 Fourth Row: Merchant, Baldwin, Strange, Haskins, Burge, Neuschwander, Auman, Ross, Wilcoxon, Burr, Ruth, Kennedy, Pearson.
 Third Row: Ensley, Hines, Conner, Durst, Whitmire, Meyers, Welch, Davis, Bowers, Baldwin, Hilton, Baker, Rice, Stevens.
 Second Row: Powell, Lewis, Daily, Warwick, Anthony, Conner, Schmidt, Simmons, Lanning, Hinthorn, Ames, Meisner, Watkins, Culbertson, Kampstra, Gilson.
 Front Row: Miss Kirkpatrick, Train, Moore, Parks, Clendenen, Neustel, Sagert, Morris, Hammock, Haskin, W. Weller, J. Weller, Baldwin, Masden.

Girls Glee



DAWN NEUSCHWANDER
 President

Girls' Glee Club has had a very successful and unforgettable year. Under the leadership of two very able directors, Mrs. Helene Price and Miss Nancy Kirkpatrick, they have turned out some very beautiful renditions of song. The first semester, Mrs. Helen Price directed this group of girls. During the last semester, Miss Nancy Kirkpatrick took over and led them through the remainder of this very successful year.

They were composed of approximately 75 girls, who were extremely active in many events throughout the year. This girls' chorus has turned out a number of notable performances, beginning the year with a Fall Concert, "Autumn Serenade," a Christmas Concert, and a Spring Concert at the close of the school term. The chorus also participated in the May Day Program, sang at a Parent-Teacher Association meeting and at many other special programs.

At the music festival in Albany April 23, the Girls' Glee Club attended and rated a "3" (good). Next year this group expects to return to this annual festival.

Officers for the 1948-49 school term were as follows: Dawn Neuschwander, president; Jerene Strange, vice president, and LaVerne Root, secretary-treasurer.

Accompanist Fay Parks has done a very excellent job in helping these girls progress rapidly.



Back Row: Young, Sikes, Evans, King, Miller, Swanson, Canoga, Campbell, Ferguson, McCown, Powell.
 Fourth Row: Brannon, Drapela, Moynihan, DeKuyper, Beck, Duncan, Klavano, McCready, Whitmore, Spence, Howard.
 Third Row: Wilson, Neuschwander, Davis, Smith, Pearce, Hinman, Weaver, Root, Modderman, Groves, Dixon, Osburn, Stolsig.
 Second Row: Alkio, Cone, Rose, Davis, Hanson, Nieman, Doggett, Bailey, Waddell, Olson, McTimmonds, Erickson.
 Front Row: Williams, Miller, Rowell, Lebahan, Johnson, Graham, Chartraw, Carlson, Carlson, Postle, Smith, McJunkin, Guggisburg.

Advanced Glee



ELAINE GUGGISBURG
 President

Advanced glee this year is made up of 65 members, boys and girls. Students in this group have all had previous training in chorus before they entered this course.

Director for the first semester was Mrs. Helen Price. Second term the group was lead by Miss Nancy Kirkpatrick.

Officers this year have been: Elaine Guggisberg, president; Gene Beck, vice president; Ardith Greer, secretary, and Dick Brannon, treasurer. Mary Waddell has been their accompanist this year and Elaine Guggisberg has been assistant.

Some very fine soloists have come out of the group this year. Bonita Johnson, Carrie Joy Erickson, Leon Drapela, Jack Evans, Gene Beck, Glen Spence, Norma Strange and Betty Doggett have turned in some outstanding solo performances.

The advanced glee has appeared in several concerts in the auditorium. They have been in the annual Autumn Serenade, and the Christmas and Spring concerts.

In January they put on a unique assembly for the student body. The western theme was carried out in both costumes and music. Several numbers were sung and a solo "Blue Shadows on the Trail" was sung by Jack Evans with the chorus in the background.

The advanced glee brought home honors to Lebanon from the district music contest held in Albany April 23, where they received an "Excellent" rating.



Johnson, Erickson, Guggisburg, Postle, Strange, Sommers.

Girls Sextet

The Girls' Sextet this year is made up of five junior girls and one senior girl. The girls are: Betty Sommers and Ilene Postle, altos; Dorothea Lebahn and Bonita Johnson, first sopranos, and Elaine Guggisberg and Norma Strange, second sopranos. Earlier in the year Carrie Joy Erickson was in this group but because she was unable to continue, Dorothea took her place.

The first semester Mrs. Helen Price was the director and the second semester the girls were under the direction of Miss Nancy Kirkpatrick, now the high school musical director. Mary Waddell has been accompanist for the sextet throughout the entire year.

During the year they have sung at different assemblies at the high school, PTA meetings, Lions Club, and other organizations in the town. They went over to Albany when we had an exchange assembly earlier in the year. The girls could have been heard over KWIL several times during the year. They broadcasted from Johnny Walker's studio here in town. At the annual Spring Concert this year the Sextet sang "The Easter Parade," which received many favorable comments.

This year they entered the district contest at Sweet Home and sang "My Johann." They received a "2" rating which is considered to be excellent.

Two of the girls, Bonita Johnson and Norma Strange, have at different times throughout the year, sung solos with the sextet and other musical groups at concerts and meetings of different kinds.

Sextet members are chosen at the first of the year on their voices and experience with music from all those girls who have taken chorus, or are taking it at the present time.

The Girls' Sextet deserves much praise and recognition for the fine work they have done throughout the entire year.



Back Row: Powell, Campbell, Keen, Duncan, Haynes.
 Third Row: Brannon, G. Beck, Drapela, DeKuyper, Moynihan, Howard, Miller.
 Second Row: D. Beck, McCready, Hinman, Stolsig, Osborn, Whitmore.
 Front Row: Wilson, Neuschwander, Carlson, Weaver, Galarneau, Leach, Spence.

Boys Glee



ELAINE GUGGISBURG
 Accompanist

Under the leadership of Miss Nancy Kirkpatrick, the Boys' Glee has had a successful year. They made their debut at the Annual Music Contest in Albany on April 23, singing "De Gospel Train" and "Hay Robin, Jolly Robbin." The Boys' Glee was very pleased over this contest because they came out with a "2" rating with only nine practices, while no other school received higher than a "2" rating with a whole year's practice. The Boys' Glee also sang at the Spring Concert on April 8, giving a grand performance singing the same songs they sang at the Annual Music Contest. Elaine Guggisburg, a junior, is their piano accompanist.

Lots of admiration is given to the Lebanon Boys' Glee as they give their time freely. They received no credit for their efforts, as it is not on school time. They meet every Monday night and anyone is welcome to come. There is no specified number. At the present time there are 25 boys participating in the Boys' Glee.

Next year, if at all possible, the Boys' Glee will be put on a regularly scheduled period.



Back Row: Jensen, Baertlein, Forbes, Shanks, Goodwin, Spink, Hodges.
 Second Row: Gasco, Cruise, Felton, Carroll, Clark, Otta, D. Grove, Meisner, Brinn, M. Grove.
 Front Row: Davis, MacLean, Flagel, Billings, Christensen, Anderson, Smith, Griffith, Pinkell, Speasl.

Prep Band

Lebanon Union High School has three divisions in band, beginner's band, prep band and advanced band. Prep band is the group of students between beginner's band and advanced band. Prep band members are further along than the beginners, but not quite far enough advanced to be classed with the advanced band. All three bands are under the leadership of Mr. Vinton Snyder, who was a former student of LUHS.

The Prep band opened their musical season with a performance at a Green Acres PTA meeting held April 28. Everyone who was at this meeting enjoyed the numbers the band offered immensely. The Prep band, with the advanced band, gave an interesting band concert on May 11. Everyone enjoyed the renditions of the songs and marches, and this concert gave every band member valuable experience.

May Day, a great event on our school calendar, was helped along by the Prep band, who again joined forces with the advanced band and played five lively numbers at the morning assembly. Later in the afternoon, at the Coronation of the May Queen, the band played the processional, a number for the May Pole Dance entitled Tales From The Vienna Woods, and the recessional.

After many hours of seemingly endless toil in learning to march and play, and to do it in straight, even lines, the Prep band and the advanced band marched in the parade of the Crab Festival at Newport. The marching was done under the supervision of Mr. Vinton Snyder and majorettes Marlene Olson, Myrna Dobson, Elaine Guggisburg, Bonita Johnson, Pat Spires, Bonnie Ludtke and Beverly Moore.

For the last event of the school year, they participated in the Strawberry Festival.



Back Row: Goodwin, Hoelsing, Downing, Byerley, White's, Whitmore, Tewalt, Whitten, Dart, Grimes.

Fourth Row: Modderman, Miller, Zolnowsky, Cobat, Campbell, Dillon, Moseley, Dobson, Frame, Modderman, Peoples.

Third Row: Farmer, Frank, Welch, Backman, Strange, Lee, Kimes, Williams, Dykstra, Davis.

Second Row: Brownlee, Hausen, Richards, Lott, Simmons, Howard, Morehead, Beck, Ward, Primising, Bennett.

Front Row: Humphreys, Cox, Lucas, Leach, Larson, Powell, Lane, Thompson, Chandler, Weaver, Furlong, Jordan, Netland.

Freshman Glee

A fairly new organization in the school this year was the Freshman Glee Club. This group of young students is made up of half eighth graders and half freshmen. All told, there are 57 members of which nine are boys. They meet fifth period each day in room 26.

The main object of this group is to prepare the young students for the Girls' Glee Club and Mixed Chorus in their future years in high school. They learn the fundamentals of music such as scaling, reading notes, and harmonizing.

Although only beginners, they have done very excellent work. At the Christmas concert their voices joined in the singing of three beautiful numbers, "Fairest Lord Jesus," "Lullaby" and "Mary's Lullaby." This was an especially fine achievement because they sang without the support of piano accompaniment. The Freshman Glee was heard again at the Spring Concert. The gym resounded as they sang "Jesus Walks," "I Am An American" and "I Love A Parade." Barbara Gamberg accompanied them on the piano.

First semester Mrs. Helen Price was the director of this group, and Miss Nancy Kirkpatrick was the leader of the second semester. Their part in the Christmas Concert was directed by Mrs. Price and in the Spring Concert by Miss Kirkpatrick. Both teachers have done a marvelous job in the training of these young singers.

The work of the Freshman Glee Club this year has shown steady improvement. They have very promising ability and with their fine background in music fundamentals, these students will be a great asset to the vocal departments in the coming years.



Carlson, Johnson, Carlson



Groves, Erickson, Strange

54

Girls Trio

Senior Girls Trio

Freshman Sextet

McTimmonds, Welch, J. Haskins, Doggett, M. Haskins, Daily.



ACTIVITIES





Back Row: Baldwin, Crossan, Neuman, Frum, Calahan.
 Third Row: Swanson, Zehr, Schaefer, Carlson, Bennett, Whitmore, Root, Sommers.
 Second Row: Willcoxon, Francis, York, Lewis, Wilcox, Parks, Waddell, Rhodes, Schackman.
 Front Row: Herron, Canoy, O'Brien, Landy, J. Simmons, E. Simmons, Bouslaugh, Watkins.

Latin Club



ALAN FRUM
 President

This year the Association for Promotion of Study of Latin of Elizabeth, N. J., has admitted 12 Lebanon students into the association and has forwarded dual colored Diploma-Certificates of Membership into the National Student's Latin Honor Society for outstanding achievement. This is the first year that Lebanon student's have received this honor, and the whole school is proud of them.

Presentation of certificates was made on April 27 to Mary Ann Herron, Betty Schackman, Carolyn Landy, Donna Bennett, Kathryn Wilcox, Mary Waddell, Lavern Root, Alan Frum, Wilma Lewis, Beverly Carlson, Jacquelyn Whitmore and Edwin Baldwin. To be eligible for membership in the National Latin Honor Society a student must maintain an average of 90% in grades for the first three quarters of the school year or up to April first of each year, and must subscribe to the Auxilium Latinum (Latin Aid) Magazine which is published bi-monthly in modern, every day Latin.

In grade averages this year Mary Ann Herron has maintained a 1.02 average, and Carolyn Landy and Betty Schackman tied for second with a 1.12 average.

This year the Latin Club was composed of 32 members. Officers were: Kathryn Wilcox, president; Alan Frum, vice president, and Sharon Rhodes. The members sold cokes at one of the basketball games to earn money for their pins. Twelve students, comprising Latin II class, received their Latin Club pins. Mr. Neuman was advisor.

Numerous letters were written to various motion picture distributors in an attempt to obtain slides or motion pictures relating to Rome. No response was received.



Back Row: Dobson, Durst, Root, Lewis, Ames, Frank, Forbes.
 Second Row: Heath, Simmons, W. Lewis, Herron, Canoy, O'Brien, Lindley.
 Front Row: Plymale, Neustel, Lott, Carlson, Carlson, Groves, Smith.

G. A. A.



DORIS GROVES
 President

Girls' Athletic Association held a meeting at the end of last year for the purpose of electing club officers to preside during the year of 1948-49. Doris Groves was elected president and Joan Carlson was chosen as vice prexy. To fill the office of secretary was Beverly Canoy, while the office of treasurer was capably managed by Jean Carlson. Anna Forbes was given the position of sports manager and Betty Frank was placed in charge of all publicity for the club. Mrs. Daphne Schainck is the club advisor.

Membership in the Girls' Athletic Association may be attained by earning 50 points. These points may be earned by participating in noon tournaments and outside sports. Arm shields with the numerals of the girl's graduating class may be ordered for each member, and letters may be ordered for girls earning 100 points or more.

In October a Hallowe'en Barn Dance was held in the high school gymnasium. During the evening, cider and doughnuts were sold.

Throughout the winter, intramural volleyball and basketball games were played. As the season closed there was a three-way tie in volleyball, while in basketball the freshmen team walked away with all of the honors.

Initiation services were held in May for the girls who had made their 50 points.

The annual GAA Carnival was held April 22. Club concessions and class clowns helped to make this one of the most memorable events for the GAA during the year.



Back Row: Parsons, Carlson, Murphy, Hamilton, Tampke, Liggett, Cruise.
 Fourth Row: Alley, King, Groves, Campbell, Slocum, Logan, Waddell, M. Rous, Davis.
 Third Row: Hewett, Torrey, Frank, Wilcox, A. Rous, Hammett, Lott, Pearce, Forbes, Rhodes.
 Second Row: Backman, Keen, Bush, Fitzwater, Olson, Rose, Miller, Gilbert, Smith.
 Front Row: Erickson, Fenner, Dixon, Auman, Lambert, Schackman, Mason.

Tri-Y



BEVERLY CARLSON
 President

One of the newest and most active organizations at Lebanon high school is the girls' Tri-Y.

Tri-Y formed in November and opened with a membership of 54 girls, an equal amount of Juniors and Seniors.

The traditional Tri-Y pin was adopted with its blue triangle, white cross and letter "L" guard.

Officers for this year are as follows: Beverly Carlson, president; Jane Slocum, vice president; Betty Schackman, secretary; Thelma Auman, treasurer; Janice King, historian; Carrie Joy Erickson, song leader; Doris Groves, chaplain, and Mary Waddell, student council representative.

This club is under the leadership of Miss Dorothy Schiltz and Mrs. Virginia Gilley. There has been an adult advisory committee consisting of Mrs. Galley, chairman; Mrs. K. A. Murhuson, Mrs. Paul Southworth, Mrs. C. H. Galloway and Mrs. William Thomas.

Activities for the year consisted of drawing up a constitution, giving Christmas candy to the faculty and shut-ins, making historical table decorations for the state convention at Salem attended by Beverly Carlson, Carrie Joy Erickson, Doris Groves, Sharon Rhodes and Janice King, the Hi-Y and Tri-Y pot luck dinner, joint meetings of Hi-Y and Tri-Y on boy and girl relations, a carnival booth with a display of friskies and hats, a trip to the coast, drive-in theater party and Senior farewell.

We are looking forward to the coming years in the hope that this organization will carry on with as much enthusiasm as it began with this year.



Back Row: Sylvester, Haynes, Haughton, Slocum, Gill, Krapes, Smith, King, Harris (Moss)
 Second Row: Alkio, Cone, B. Carlson, Groves, J. Carlson, J. Carlson, Waddell, Forbes.
 Front Row: Campbell, Frank, Hewett, Fitzwater, Olson, Rose, Mason, Rhodes, Miller.

Dramatis Personae



DIXIE LEE FITZWATER
 President

Dramatis Personae, the drama club of Lebanon Union High School, is an honorary rather than a social organization. Leading the club through the very successful year of 1948-49 were the following officers: Dixie Lee Fitzwater, director; Bill Hunt, stage manager; Barbara Olson, scribe, and Barbara Smith, business manager. Advisor was Miss Gloria Johnson.

Specific requirements for membership are enumerated in the constitution. Some are: that you must have appeared in a public presentation, or be in one of the two speech and drama classes with a grade average of two, or worked on the production staff of a public presentation and show a definite interest in the field of drama.

Two initiations were performed during the year to admit new members into the club. Membership cards and club pins are awarded upon payment of initiation fees and dues.

On November 12 a trip was made to Corvallis to see a legitimate stage production, "Passion Play," by the original Black Hills cast.

Main activities included presentation of the Christmas assembly, sponsoring a performance here of "Dear Ruth" by the Sweet Home drama department, and, combining with the two speech and drama classes, Dramatis Personae sponsored Lebanon High School Drama Nite which consisted of several one act plays and skits.

Officers for the following year were elected near the closing of the second semester.



Back Row: Erickson, Abbott, Pruitt, Heath, Liggett
 Second Row: Saxton, Logan, Gabel, Pratt, Canoy, D. Forquer.
 Front Row: Alley, Noffsinger, Alkio, Sylvester, Gilbert, Harris, S. Forquer.

Library Club



JOE ABBOTT
 President

Consisting of 20 members, the Library Club elected as its officers for this year the following students: Joe Abbott, president; Beverly Canoy, vice president; Gloria Logan, secretary, and Dorothy Forquer, treasurer.

Members of this club are both former and present library assistants, and are chosen by Mrs. Grace Burns, librarian and club advisor, at the beginning of the year. They are chosen from students who have been recommended by two teachers for their dependability, intelligence and efficiency. A pleasing personality is also an essential qualification. The purpose of the club is to learn fundamentals of librarianship.

The efficiency of the library depends upon these assistants and the way they carry out their various duties, which are assigned at the beginning of the year by Mrs. Burns.

Louise Alkio and Elsie Pratt take care of overdue books and fines. Elsie is also in charge of the periodical file.

Dorothy Forquer is in charge of the circulation records. Working at the circulation desk are Marjorie Sylvester, Earletta Saxton, Shirley Liggett, Shirley Heath, Shirley Forquer and Helen Alley. Elsie Bush, Aldyth Gabel, Helen Gilbert, Ruth Harris, Dorothea Lebahn, Shirley Liggett and Josephine Noffsinger take care of the typing which is required.



Back Row: Lott, Campbell, Pearce, Lindley, Surry, Baldwin.
 Second Row: Gamberg, Neuschwander, Carlson, Slocum, Smith, Logan, Davis.
 Front Row: Backman, Waddell, Hewett, Rose, Rhodes, Rowell, Dodds, Chandler.

Girls League Council



BARBARA PEARCE
 President

This year, as in years before, the Girl's League has been one of the most outstanding clubs in school by offering all girls in school a chance to participate in common activities.

Activities this year have included sponsoring dances, selling hot dogs, coffee and coke at football and basketball games, a Big-Little Sister party, caroling party at Christmas, putting on an assembly for the school, producing the play "Brother Betty" with the help of the Hi-Y boys, and contributing to the Red Cross.

Officers this year were: Barbara Pearce, president; Jane Slocum, vice president; Betty Lindley, secretary; Molly Hewett, social chairman, and Beverly Carlson, Big Sister. Representatives from classes were: Seniors—Dorothy Campbell, Alice Rose, Barbara Smith; Juniors—Mary Waddell, Sharon Rhodes and Jean Rowell; Sophomores—Barbara Lott, Dawn Neuschwander and Merrilee Baldwin; Freshmen—Barbara Gamberg, Agnes Backman and Margaret Surry; and Eighth Grade—Luan Chandler, Kathyne Davis and Pat Dodds. Mrs. Kay Greame acted as faculty advisor. Delegates to the state conference were Mary Waddell, Doris Groves, Barbara Pearce and Mrs. Greame.

Meetings are held once a month consisting of regular business, awarding of Girl-of-the-Month cards to outstanding girls from each class, a short program, and this year the guest speakers have been Dean of Girls from nearby colleges.

The League is again giving two fifty dollar scholarships to deserving senior girls.



Back Row: Elliott, Nelson, McCown, Ferguson, Powell, Baldwin.
 Fifth Row: Miles, Downing, Klavano, McCracken, Carlson, Christensen, Knox, Baldwin.
 Fourth Row: Dodds, Lebahn, O'Brien, Thompson, King, Workman, Connet, Liggett, Logan.
 Third Row: Brownlee, Connet, Davis, H. Lott, Moore, Wilcox, Sparks, Arnold, Washa, Mohoff,
 Herron, Carlson, Payne.
 Second Row: Frank, Bennett, Farmer, J. Carlson, B. Lott, Lindley, Canoy, Landy.
 Front Row: Leach, Swanson, Haynes, Krapes, Dunkley, Weaver, Wilber, Lowe.

Paletteers Club



JANICE KING
 President

The Paletteer's Club started an active year under the guidance of the following officers: Janice King, president; Helen Lott, vice president; Betty Lindley, secretary; Dick Nelson, treasurer; Bob McCracken, representative, and Joan Carlson, business manager. These officers were elected at the end of the last school year. The club was helped and instructed throughout the year by a very able advisor, Miss Lovedy Burkholder.

Throughout the school year, the Paletteer's Club has taken several field trips and have gone to different exhibits. Several of these were: a trip to Portland to see the Scholastic Art Exhibit, Portland Art Museum, and the Historical Museum at Corvallis in February; and a trip to Eugene to visit the art departments of the University of Oregon, high schools, and the Oriental Museum in May. The trips proved a big success and helped the students to view the fine works of art. Chartered busses were used and all trips were very well attended.

The Paletteer's Club participated in the following school activities: helping with the stage setting for most school activities; for all the concerts and the stage setting for the Glee Club assembly, senior play "Smilin' Thru," junior play "Inner Willie," decorations for the May Day Coronation and other festivities. Another planned event is the decoration for the coronation of the queen and her court at the Strawberry Fair.



Back Row: Chamberlain, Porter, Christensen, Anthony, Sollenberger, B. Temple, Hinman, Duncan, T. Temple.
 Fourth Row: Jacobson, Hunt, McKinney, Gill, B. Olson, D. Carlson, A. Frum, Haughton.
 Third Row: Simi, Howard, Howe, Michelson, Haynes, Cox, R. Frum, McCracken, Zurcher.
 Second Row: Weaver, Rhodes, Davis, Benz, M. Olson, Gilbert, Groves, B. Carlson, Shartel.
 Front Row: Hewett, Miller, Slocum, Herron, J. Carlson, Rose, B. Olson, J. Carlson, Lindley, Neustel, Pearce.

Lebonski Club



JIM FRYREAR
 President

This year the Lebonski Club, under the capable leadership of Mr. Lewis Clark, only went skiing twice. This was due to the fact that "Old Man Winter" put a snow slide on the road everytime they wanted to go. Although they didn't go skiing as much as in previous years, the two trips that they did take were very enjoyable.

The members would like to thank the administration and the bus drivers who drove the buses to the bowl.

The club was organized six years ago. Since that time it has grown from the original 20 members to about 60 members. At the start of the year it was decided to elect enough new members to raise the club to its present membership of 60.

The Lebonski Club now has an official emblem, created and distributed in the last year. It is on a blue background with a Warrior (in honor of LUHS's nickname) doing very fine on a pair of skis. The emblems are to be worn by all

the members on their sweaters, which will give a very fine impression and will aid each member in being recognized as such.

Last spring the ski club elected the following officers for the 1948-49 term: Jim Fryrear, president; Tom Temple, vice president; Barbara Pearce, secretary, and Doris Groves, treasurer. Financially, the club has broken even.

This year the club is going to award a trophy at the annual award assembly to their most outstanding member. All members will vote on the one of their choice.



Back Row: Herron, Lindley, Bennett, Doggett, Schmidt, Lewis, Merchant, Suing, Pearl.
 Fourth Row: O'Brien, Canoy, Strange, Simmons, Parks, Sprague, A. Forbes, Muller, Mohoff, Dillon.
 Third Row: Neuschwander, Tampke, Harris (Moss), Torrey, Farmer, Johnson, Masden,
 Baldwin, Lane, Byerley, Samla.
 Second Row: Meyer, Jordan, Culbertson, Myers, Baldwin, Waddell, Miller,
 Zolnowsky, Connett, A. Forbes.
 First Row: Presley, Carter, Whitmore, Daily, Cruise, Sparks,
 Arnold, Washa, Rowell, Miller, Roe.

F. H. A.



JACKIE WHITMORE
 President

The Future Homemakers of America Chapter enjoyed another successful year under their able advisor, Miss Edith Schifferer, with Mrs. Joseph Council assisting her. Both are home economics instructors.

At the first meeting on October 5, the following officers were elected: Jacquelyn Whitmore, president; Jean Rowell, vice president; Marie Carter, secretary; Mary Waddell, treasurer; Joyce Connet, historian; Charlotte Tampke, parliamentarian, and Beverly Canoy, social chairman. They were installed by Mary Waddell on October 20.

The advisors and two members, Charlotte Tampke and Marie Carter, attended the state FHA Convention at Corvallis in March.

The FHA participated in many activities during the year, including a chili feed after practice one evening for the football players, sponsoring of an assembly before the whole school, and decorating and serving at the annual Fish and Game Association Banquet. This brought in \$75 to the treasury funds. The club also sponsored a cooked food sale with members cooking the food, put on a doughnut sale in the school hall, gave a donation to a needy family at Christmas, donated to the polio fund, sent a CARE package overseas and gave a caroling party at Christmas.



Back Row: Lundholm, Osterman, Arnold, Preston, Van Atta, Nelson, Fleming.
 Second Row: Sylvester, Smith Fenner, Hake, Chartraw, Keen, Tuma, Harris.
 Front Row: Moore, Spence, Magee, Nelson, Carter, Lee.

T. & I.



SHIRLEY KEEN
 President

This year the Trades and Industries class, better known as the T & I class, has been very active in and out of school. The students go to school five periods of the day and work the rest.

Officers elected at the first of the year were: Shirley Keen, president; Doris Hake (Shimanek), vice president; Kathleen Cruise, secretary-treasurer, and Monty Bean, sergeant-at-arms.

In the T & I class the students learn through experience as well as by books. Many businesses are represented by students in this class, some of which and the student representing them are: Marjorie Sylvester, Jordan's Studio; Kathleen Cruise, Lebanon Paint Store; Elaine Smith, Linn County Telephone Co.; Mary Fenner, First National Bank; Doris Hake (Shimanek), Shimanek's Bakery; Donna Chartraw, Rainbow Inn; Lilly Tuma, Durlam's Bakery; Marie Lambert, Mayflower Milk; Vernon Moore, Harvey Duerkson; Glenn Spence, Robertson's Grocery; Bill Nelson, Fairview Garage; Dale Carter,

Cascade Bike Shop; Dean Lee, Boyde Young; Bob Osterman, H. Osterman; Charles Arnold, Santiam Foundry; Lowell Preston, Irish & Warner; Merritt Van Atta, Valley Feed & Seed; Pat Parsons, Mary Street Machine Shop, and Frank Fleming, Ray's Signal Service.

Their employer-employee banquet was held in the school cafeteria January 27. T & I President, Shirley Keen, welcomed the employers and introduced members of the school board, apprenticeship council and the state department. Out-of-State guests were introduced, along with T & I students. The speaker of the evening was Mr. Thomas.



Back Row: Frum, Fryrear, Duncan, Patterson, Carlson, Beck, Glaus.
 Front Row: Voss, Tanner, Foltz, Temple, Hinman, Carter.

Fire Squad



GENE TANNER
 Fire Chief

Waiting for completion of the new building the fire squad had been inactive, but as soon as the hoses and extinguishers were put in they quickly organized again.

Mr. Parham, the new advisor, then called a meeting of all the old members. New members were the first problem so the members turned in a group of boy's names to be checked through the office to see if a grade average of a "3" had been maintained. New members in the squad are Lyle Foltz, Dick Duncan, Tom Temple, Bill Baker, Bob Hinman, Darrell Carlson, Gene Beck, Dee Carter, Ralph Voss, Lloyd Glaus and Marshall Swink.

After the new boys were checked on and accepted, they elected a new fire chief. Gene Tanner won over Al Frum and Ken Gallagher.

Mr. Parham then assigned them to various posts throughout the building and it is their responsibility to be there at every fire drill and check that part of the building to see if doors are closed, lights are off and windows are closed.

Mr. Parham drew up a constitution for the squad and had a copy made for each of the members and they voted it in.

The object of the club is to have a group of boys who have a thorough knowledge of the building and how to use hoses and fire extinguishers, who could direct the rest of the students out of the building in case of fire and also help fight the fire if the need arose.



Back Row: Fenner, Lewis, Hines, Davis.
 Second Row: Carlson, Keen, Pearce, Gabel, Auman.
 Front Row: Erickson, Cone, Rose, Olson, Backman, Simi.

Office Girls

The office force is made up of a group of senior girls who do general office work and run errands one period a day. Credit is given toward graduation, but is not as easily acquired as might be expected. The girls are kept busy with the collection of absence slips from each room in the building, answering the telephone, waiting on the public, taking messages of various kinds, helping keep the attendance records, running the mimeograph and ditto machines, typing, running numerous errands and assisting Miss Louella Hackett, secretary to Mr. A. B. Cash. Girls with some typing or stenographic experience are usually chosen.

The 15 senior girls who shared the office duties this year were: Shirley Keen, Barbara Olson and Juanita Hines, first period; Sally Davis and Aldyth Gabel, second period; Norma Strange, Thelma Auman and Kathleen Cruise, third period; while Beverly Carlson was the only girl who worked with Miss Hackett the fourth period. Fifth period in the afternoon found Jackie Simi and Carrie Joy Erickson sharing the duties; Pat Cone and Alice Rose worked sixth period, and Louise Backman and Gertrude Lewis could be found in the office the seventh period.

Such work as the filing, typing, and meeting the public that the girls do, will be valuable experience in the future if they plan on a career that involves any of these. The aim the girls strive for in their work is efficiency, a great asset for anyone regardless of occupation.

The experience the girls receive by keeping school records would be of a great value if they ever wanted to go into such work full time.

Being office girl isn't all work and no play. While the office force does not have any organized outings or trips as do other school organizations, the girls have fun just being together and gaining the experience that may prove so valuable to them someday.



Back Row: Groves, Carlson, Carlson, Pearce, Slocum, Waddell, Benz, Baldwin, Fenner, S. Davis.
 Third Row: Miller, Rust, Schmidt, Bateson, Daily, J. Simmons, Alley, E. Simmons, Simi, Shartel.
 Second Row: Hewett, Herron, Schackman, Rhodes, Lott, Nelson, Neustel, Weaver, O'Brien, Frank,
 Netland, Backman, Turner.
 Front Row: Byerley, Gilbert, Canoy, Lindley, Neuschwander, B. Davis, Rose, Mason, Hamilton, Saxton,
 Olson, Fitzwater, Hammett.

Pep Club



BARBARA OLSON
 President

The Pep Club this year, as in the past, has been a very active club, sponsoring dances after the football and basketball games during the year, selling cokes and ice cream bars at the games and putting on assemblies. They sponsored a dance with the Lettermen's Club earlier in the year and it was a very nice dance. The girls can be seen at every football and basketball game, both at home and away, cheering their team.

It is made up of 46 members plus the advisor, Miss Verna Lewis. There are 14 seniors, 12 juniors, ten sophomores and eight freshmen in the group. They are led in their yells by five yell leaders. The yell leaders are chosen at the end of each year by the student body. This year there were three girls and two boys. They were Beverly Davis, Joe Galarneau, Alice Rose, Dale Leach and Barbara Mason.

At the end of each year the officers for the next year are elected. The president is a Senior, vice president is a Senior, secretary is a Sophomore, and the treasurer is a Junior. This year the club was under the leadership of Barbara Olson. Vice president was Dixie Lee Fitzwater, secretary Marlene Shartell, and treasurer Sharon Rhodes.

This club is one of the most active organizations in the high school and has had a very successful year.



Leach, Rose, Mason, Galarneau.

"A" Squad

Cheer Leaders

"B" Squad

O'Brien, Weaver, Neustel, Nelson, Lott.





Back Row: Zurcher, McKinney, Foltz, Holzfuß, Patterson, Abbott, Fryrear, Gallagher, Haughton, Baker.
 Second Row: Cox, Gill, Miller, Hamilton, Russell, Roe, Parsons, Fenner, Hebert, Tanner.
 Front Row: Wagner, Alley, Rhodes, Simi, Fitzwater, Schackman, Hammett, Slocum, Cruise, Hills.

Hi-Light



DIXIE LEE FITZWATER
 Editor

Great anticipation filled LUHS on the day the Hi-Light was to come out. It was published bi-weekly, coming out every other Thursday. Publications class saw many new faces this year but, under the supervision of Mr. Howard Hickcox, they turned out a real big-time paper in spite of their inexperience.

Advertising, solicited from the businesses of Lebanon, paid for the publication of the paper. The two business managers, Jane Slocum and Rockne Gill, had the job of getting these ads.

Staff members for the first term were: Dixie Lee Fitzwater, editor; Bob Patterson, associate editor; Rocky Gill, business manager, and Jane Slocum, associate business manager. For the second term they were: Bob Patterson, editor; Dee Miller, associate editor;; Rocky Gill, business manager, and Jane Slocum, associate business manager.

This big-little publication carried stories of all the activities in school and was a great help as a source of publicity for the many activities sponsored during the year. The staff has tried to get as many pictures in the paper as possible. There were columns on class news, clubs, fads and fashions, and an "introducing" column with pictures.



BOB PATTERSON
 Editor



Back Row: Bates, Hauxwell, Campbell, Tanner, Abbott, Baker, Carper, Gallagher.
 Fourth Row: Bean, Thoma, L. Glaus, Lee, A. Frum, Cox, Gill, Howard, Hebert.
 Third Row: Mitchel, M. Christensen, Gilbert, Spence, Voss, Houghton, Olson,
 Osterman, Duncan, Young, Andres.
 Second Row: Fryrear, Peoples, Anthony, Pracht, Sollenberger, Porter, Michelson,
 Miller, Bartels, McGourty, Richards, Swink.
 Front Row: Sanderson, Haynes, Messal, Howe, Patterson, Canaga, Baca, Ayers,
 Carter, Bean.

Lettermen's Club



JIM FRYREAR
 President

Early in the year, Lettermen advisor Earl Gerfin called a meeting of all Lettermen and the following officers were elected: Jim Fryrear, president; Gene Tanner, vice president; Dick Haughton, secretary-treasurer, and Stan Porter, sergeant-at-arms.

This year the Lettermen have been most active. Mr. Cash, principal, put the Lettermen in charge of the concessions at the basketball games. The Lettermen then distributed the concessions and dances to the clubs and classes. The "L" men were assigned the selling privileges since a percentage of the profit was designated for the athletic fund.

The second project was the semi-formal dance, "Winter Wonderland," which the Lettermen and Pep Club went together on for the first time.

Mr. Cash asked the boys to undertake the responsibility of keeping the new building in better condition.

At the annual GAA Carnival the club sponsored a penny-pitch table which proved very successful. They are going to maintain the concession at the Carnival.

This year the regular initiation was replaced by a banquet given in honor of the new Lettermen on May 13.

In the assembly program, the Lettermen and the GAA combined their talents for a rousing "send off" assembly for our state tournament bound basketball team.



Back Row: McKinney, Cox, Frum, Tanner, Haynes, Starnes, Foltz, Osterman.
 Third Row: Klavano, Miller, Patterson, Duncan, Ayers.
 Second Row: Carter, Howard, Baker, Haughton, Powell, Frum, Porter, Horton.
 Front Row: McCown, Gill, Abbott, Gallagher, Voss, Drapela, Hebert, Fryrear.

Hi-Y



ROBERT OSTERMAN
 President

Hi-Y is one of the leading boys' organizations in Lebanon Union High School. Any boy attaining membership to this organization has made for himself, and the school, an honor that will last through the years.

Starting the year with a large group of neophytes, the club was expected to do great things, and it lived up to all expectations.

Highlighting the year was the annual Hi-Y Spring Formal held on March 26. The dance was a huge success and shall go down in memories as one of the best Hi-Y dances ever put on. Another highlight was the Hi-Y and Try-Y banquet put on by the Tri-Y. The banquet was held in the school cafeteria, and after a very splendid dinner Miss Dorothy Schiltz, who is Tri-Y advisor, opened a discussion on boy and girl relations. Although no problems were solved, it did open the path for clearer thinking and a better understanding in boy and girl relations.

A Hi-Y picnic was planned and was held in the latter part of May.

Under the advisorship of Bud Page, the Hi-Y has ended a very successful year. Although losing many of the old members, the club will continue its good work in years to come through the new members that are being initiated this year.

The Hi-Y motto is "to create and maintain high standards of Christian character throughout the school and community."



Back Row: Seits, Crossan, Lott, Christensen, Sturgeon, Gainer.
 Second Row: Smith, Edwards, Porter, McPherson, Coddington, Powell.
 Front Row: Koepke, Howard, Hawes, Fiala, Leach, Kirklie, Anthony

Machine Shop



STANLEY PORTER
 President

Lebanon Vocational Machine Shop Club was organized Dec. 2, 1947, and now boasts a membership of 22. The club was organized for the purpose of promoting better thinking and more reliability among students, so that they may enter any vocational field after graduation.

Club officers for this year were elected October 13 and included Stanley Porter, president; Don Anthony, vice president; Clarence Coddington, secretary-treasurer, and Leonard Gainer, club advisor.

Financial problems of the club were solved by doing custom work for people, including welding fenders, fender braces and logging truck trailers. A bid was submitted and contract awarded for building a working model for a gearless transmission for F. W. Seeck, a Lebanon inventor. This developed into an interesting and profitable project.

The money received by the club was spent and enjoyed by a majority on a two-day trip to Siltcoos Lake.

Many interesting personal projects were completed by club members. Among these were a winch for a jeep, a three-in-one screwdriver, a wood lathe, a utility trailer, a band winch, a bench grinder, and a compound rest for a 6-inch metal lathe.

The club has been useful by doing repair work for the school. This included rebuilding a wood lathe, making 12 faceplates and bench straps for the wood shop, making badminton net posts for the tennis court, sharpening knives for the cafeteria, installing piano castors, repairing rails around old wood shop and installing door closers.



Back Row: Campbell, Ferguson, McCown, Foltz.
 Second Row: Bartels, Canaga, Evans, Thoma, Galarneau.
 Front Row: Hauxwell, Carter, Voss, Fryrear, Olson, Patterson.

Visual Aides



JERRY BARTELS
 President

The Visual Aides Club has done its work very well this year. The job was to show movies to the students when a teacher had one scheduled. The Visual Aides orders and shows it when the teacher wants it.

There were a few new boys elected this year who were taught to use the projector. The members were given a certain period to show a film. If there was not a film, they would overhaul the equipment and repair film.

Jerry Bartels was elected Visual Aides president for this year, and served very well at his job. Mr. Dodds is the advisor and orders all of the films that the teachers need.

Films were shown to the high school and Queen Anne grade school. There were over 200 films shown this year, and approximately 50 strip films. Many new strip films were added to the film library this year.

There are 15 members in the Visual Aides Club this year, and nine of them are new members who have learned to operate the movie projector. There are only three members who will be back next year to carry on with the job.

The wire recorder was used much more this year than it was last. Mrs. Wilshire used it this year to give tests to Seniors. Thus the recorder became very useful to many.



Back Row: Krapes, Swanson, Campbell, Rose.
 Second Row: G. Powell, R. Bean, Andres, McCown, Neuschwander.
 Front Row: Ferguson, Fiola, J. Powell, Blount, M. Bean.

Stage Craft



ELMER FERGUSON
 President

Although one of the youngest organizations in Lebanon Union High School, the Stagecrafters Club has made a good showing for itself.

Prior to its organization, flats for the stage were made of painted cardboard, but under the direction of Kenneth Schenk wooden flats covered with cloth were made. These flats, made in 1947-48, have been revamped and repainted for all stage productions since then, excepting for this year's Senior play when an entirely new set was planned as the play required an outdoor set. Some ingenuity was exercised by the club in working over the garden walls for use in the Spring Concert.

The complete list of productions for which the club cleaned and arranged the stage, includes class and club assemblies as well as major productions like the Girls' League play "Miss Jimmy," Junior play "Inner Willie," and Senior play "Smilin' Through."

The charter members of the club were Richard Fiola, Elmer Ferguson, Jack Powell, Wally Campbell and Freddie McCown. The club has made its presence welcome by helping other groups in their endeavors. The false wire front for lilacs before the stage during the Junior Prom and some carpenter work on the Queen's stand for May Day have been gratefully acknowledged.

Last year and this the platform for Senior graduation was their responsibility.



Back Row: Hauxwell, Temple, Jean Carlson, Harris, Tuma, Phelps, Fitzwater, Speas, Mason, Torrey, Holzfluss, Cooley, Scott.
 Second Row: Alkio, Pratt, Liggett, Tampke, Whitmire, Gabel, Torrey, Forquer, Neavoll, Simmons, J. Carlson, Sommers, Alley.
 Front Row: D. Carlson, LaFond, Gilmore, Ford, Duncan, Simms, Zehr, Hersom, Rhoades, E. Miller, Brewster, Haggard, F. Fleming.

Driving Class

This is the first year of Lebanon high school's driving class. It proved to be a success. The first semester there were 25 students who finished the course and the second semester there were 29. Mr. Scott, the driving teacher, went to Portland for his training in February, 1948. He attended the training school for 8 hours a day for one week.

The car is loaned to the school by the American Automobile Association and General Motors with the local Chevrolet dealer in charge of the car. The school has to provide it with gas, oil and lubrication. There is also an insurance policy on the car, which takes care of all damages running over the price of \$50.00.

The terms of the contract are: first, take care of the car; second, have a trained driver; third, use the car for training purposes for at least two periods a day; fourth, keep the car properly insured; fifth, follow the prescribed course of study; sixth, require at least 36 hours of book study and 32 hours of actual road driving.

After the student has acquired all of the necessary requirements, he is eligible to receive a certificate which is signed by four important men: the governor, the secretary of state, the local superintendent of schools and the superintendent of public instruction at Salem.

Each student received one-half credit for this course, since it is only one semester.

After each year, or after the school has put 8,000 miles on the car, the local dealer takes the car and gives the school a new one.



QUEEN ALICE ROSE



NORMA STRANGE
Princess



HELEN JO GILBERT
Princess



MARY FENNER
Princess

Mayfair



MARY ANN TURNER
Princess



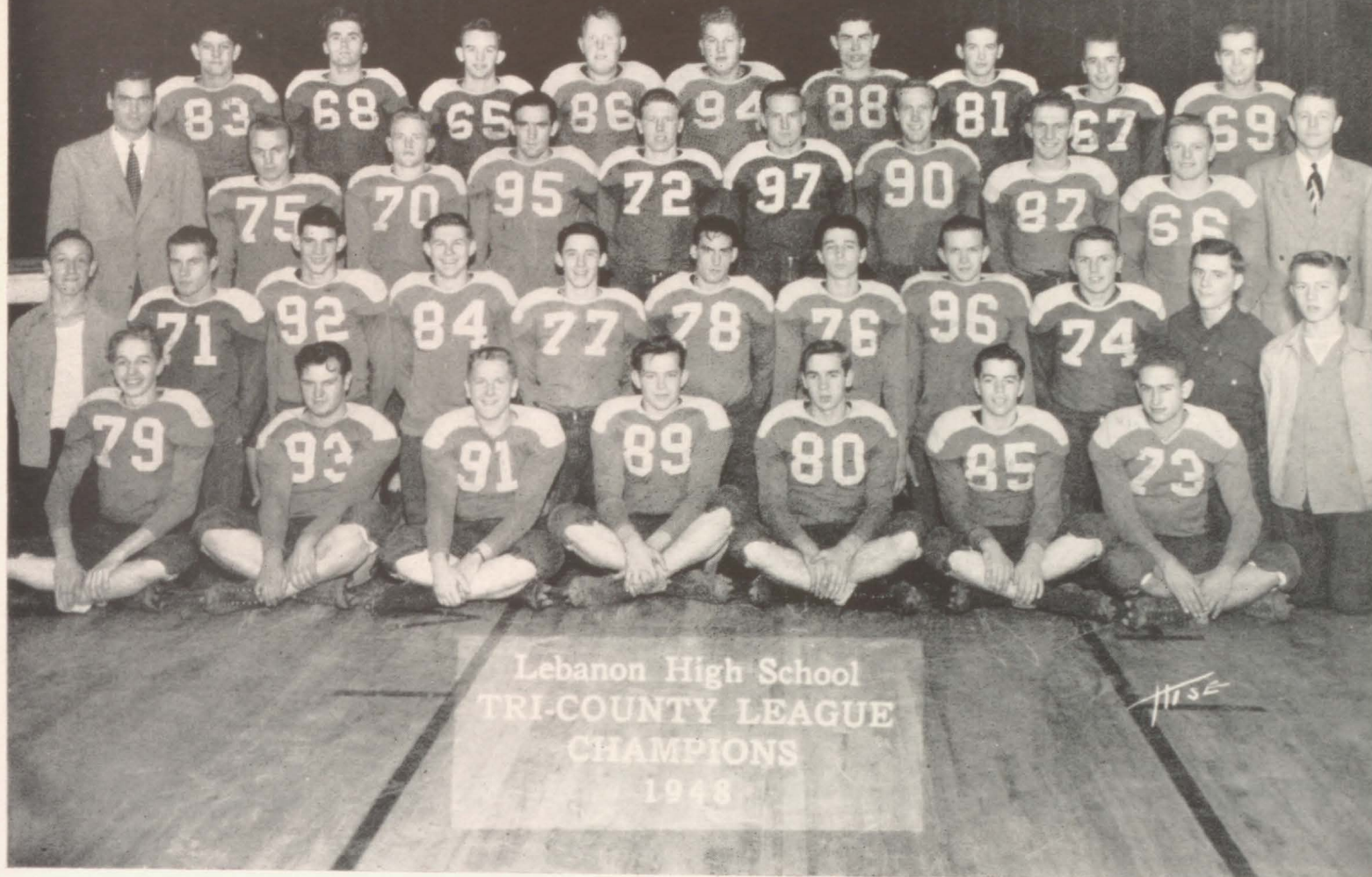
JEAN CARLSON
Princess



SALLY DAVIS
Princess

SPORTS





Back Row: Baca, Drapela, Jacobson, McCown, Carper, Sollenberger, Clark, Howe, Howard.
 Third Row: Van Pelt, Evans, Bartels, Duncan, Frum, Anthony, Fryrear, Porter, Hebert, Page.
 Second Row: Richards, Haynes, Swink, Haughton, Cox, Wells, McGourty, Campbell, Baker, Huston, Beck.
 Front Row: Gallagher, Mitchell, Thoma, Canaga, Gill, Michelson, Gilbert.

Varsity Football Squad

The consistent practice of the team, from Sept 1, paid off when they downed Newport eleven on the 17th, 12 to 0.

The next game was one of the highlights of our season. We played Albany on their field and lost 21 to 0. Although we lost, Lebanon played one of their best games against one of the state's best prep football teams.

After losing the heart-breaking Albany game, we came right back that next week to tie Corvallis 6 to 6. This was a moral victory in one sense of the word, as the Spartans were supposed to have a top-notch team and were slated to take Lebanon with ease.

In our next clash, we again felt the feeling of victory as our team romped over Toledo to the tune of 33 to 0.

Sweet Home was next on the list, and the Warrior tomahawk struck hard for another Lebanon win, 26 to 8.

We then journeyed to Redmond and lost 12 to 6. Redmond made their second score shortly before the final gun sounded. So Lebanon's chance to score again was very slim.

Taft was slated next, and with vengeance in their eyes the Warriors really waxed them 34 to 7, giving us undisputed Northern Division title in the Tri-County League.

Our next fray was with University High of Eugene, Southern Division winners for the Tri-County championship. This is one game that the players and the people of Lebanon should remember for a long time. It would have been a rough battle for any team in the state to have beat Lebanon that night, as they really showed their power by wiping out Uni High 21 to 13 and winning the trophy. This was the first time in history Lebanon won this crown.



Back Row: Fryrear, Christensen, Bates, Tanner, McGourty.
 Front Row: R. Frum, Abbott, Patterson, A. Frum, Evans, Hebert, Trigg.

Basketball "A" Squad

For the fourth time in five years the Lebanon High School Warriors won the District Seven Pennant and with it the right to enter the state tournament playoffs at Eugene. In winning this honor, the Warriors set a record for District Seven by sweeping through the entire league season without a single defeat.

The Warrior quintet played a total of 34 games this season. They won 25 contests, while dropping only nine.

This fast-breaking, hard-playing Warrior team gained recognition throughout the state as one of the speediest, flashiest teams anywhere. Handicapped by lack of height, Coach Lawrence (Bud) Page developed a lightning-fast break.

Highlights of the season were Lebanon's victories over Roosevelt High of Portland in two hard-fought games, Lebanon's last quarter rally that defeated Albany 42-33, Lebanon defeating the Willamette Frosh in one of the fastest games ever seen on the local court, the Warriors outlasting the Toledo Boomers 45-36 to clinch the District pennant, and when the University of Oregon Frosh team barely edged out a fighting Warrior team 40-37.

Lebanon's Warriors entered the State Tournament as favorites to finish in the finals, but state championship hopes were blasted by a fired up Central Catholic squad. The Warriors did, however, defeat Jefferson High of Portland 58-56. Medford's Black Tornado again stopped the Warriors 35-30 on the following day to put the Warriors out of the competition.

Everyone who followed the Warriors throughout the season will remember the ten boys who made up the squad. Of the ten boys, nine will be lost through graduation, while the other will be ineligible due to his age.

Lettermen are Jack Evans, guard; Joe Abbott, guard; Bob Patterson, center; Gene Tanner, forward; Alan Frum, forward; Don Hebert, guard; Don McGourty, guard; Mearyle Christensen, center; Jim Fryrear, forward, and Harold Bates, forward.



Back Row: Christensen (Mgr.), Gilbert, Baker, Holzfuss, Beck, Hamilton, Whitmore.
 Front Row: M. Kirkelie, E. Kirkelie, Hinman, Michelson, DeKuyper, Summers.

Basketball "B" Squad

When the basketball season began, it held a very grim outlook for the "B" squad, who had only four numeral winners returning. They were Bob Hinman, Wayne Holzfuss, Gene Beck and Maynard Kirkelie. But as practice season began, a lot of good prospects turned up. And after several cuts, the squad consisted of Bill Baker, Gene Beck, Wayne Holzfuss, Bob Hinman, Ernie Kirkelie, Jim Whitmore, Jerry Hamilton, Wally DeKuyper, Maynard Kirkelie, Tom Summers, Sam Gilbert and Jack Michelson.

The "B" squad played a total of 23 games and won a total of 18. The team lost to such squads as Brownsville "A" squad, Shedd "A," Halsey "A," Corvallis "B" and the Lebanon High seniors. The Lebanon Braves won all but one of the district games, losing to Corvallis in the final minutes of play. Lebanon was in possession of the ball as the buzzer sounded. Other highlights of the season was the defeating of Jefferson's "A" squad 63 to 23. Also the defeat of Albany on their own maple, 33 to 28.

The record of individual scoring was taken by Bob Hinman with a total of 217 points, followed by Wayne Holzfuss with 180. Other top scorers were: Gene Beck, 121; Ernie Kirkelie and Bill Baker, 102. The squad had a 40 point average per game, leaving their opponents with a 30 point average.

Lebanon will be seeing a lot of these boys who played "B" squad on the varsity next year, as none of the varsity boys are returning.

This year George Van Pelt, a graduate from the University of Oregon, coached the "B" squad through a very successful season. As a result, the Lebanon "B" squad came out on top of District 7 play, by only losing one league game.

Bob Christensen was a very fine manager, as he was always willing to do things and was also always on time.



Back Row: Jacobson, Richards, Moseley, Temple, Klavano.
 Second Row: Stolsig, Simi, Southworth, Brown, Trabont, McCracken.
 Front Row: Morehead, Beck, Nesbitt, Osburn, Swanson, Campbell, Ackeret, Wilber.

9th Grade Basketball

Under the guidance of Coach Lewis Clark, Lebanon's ninth grade basketball team completed a fairly successful season. The freshmen boys who made up the squad gained valuable experience which will no doubt be a great help to them in following hoop years.

The ninth grade boys won five contests while dropping four in a total of nine games played. The squad won two games from Albany, one from Sweet Home Rooks and two from Corvallis. Losses included three defeats at the hands of the towering Albany Freshmen and one from the Lebanon "B" squad.

Out of 14 boys who played on the squad, Johnny Stolsig was high point man for the season with 49 tallies. Wayne Klavano gathered 40 points followed by Carl Swanson with 27. Dean Beck was close behind with 26. Richard Campbell bucketed a total of 22 points, while James Mosely dropped in 19, Bill Temple 13, Dale Ackeret 11, Richard Osburn 6 and Douglas Nesbit 4. Other boys who made up the squad were Jimmy Jacobson, Darrell Richards, Jerry Simi and Jim Southworth.

Most of the boys lacked height, but what they didn't have in altitude they made up for in basketball skill.

Results of season play were: Ninth Grade 27, Albany 17; Sweet Home was next to fall, 34 to 26. Albany came back to defeat Lebanon 21 to 16. Albany's red-hot squad again dropped Lebanon 21 to 18 in a thrilling contest. Lebanon's baby Warriors, the "B" squad defeated our ninth graders 36 to 13. Another hard fought contest with Albany saw the young Bulldogs defeat the Lebanonites by a two point margin, 27 to 25. Lebanon's Rooks entered the victory column again by dropping Corvallis Junior High 31 to 22. In the last of five games played with Albany's Frosh team, Lebanon defeated them 23 to 14. Lebanon's ninth grade team closed the season with another victory over the Corvallis Spartan's Junior High team.



Back Row: Zurcher, Lott, Richards, Drapela.
 Second Row: Swanson, Fox, Phelps, Howard, Saxton, Albee.
 Front Row: Chamberlain, Sjolander, Beaton, Dunkly, Caldwell.

Eighth Grade Basketball

Junior High Cheer Leaders

Leach, Ward, Baldwin, Olson, Backman.





Back Row: Baldwin, Kirkelie, Freeman, Nesbitt, Wilcox, Powell, Miller, Rose, Cave, Carter.
 Third Row: VanVleet, LaFond, Pracht, L. Glaus, W. Smith, VanAtta
 Second Row: Davis, Grove, Duncan, M. Christensen, Brannon, Young.
 Front Row: Birch, Richards, Drapela, R. Christensen, Sanderson, J. Glaus, Collins, Koepke.

Track

Records tumbled on all sides, as what seemed at first to be a mediocre track squad came up with the spirit and determination that brought more points than had been predicted by the pessimists. Newcomers to the cinder oval were the injection that made the thinclads a well-balanced team.

Many of the men were outstanding. Duncan was chief weight man — shotput and discus were his meat. Sollenberger set new records in the high jump and broad jump. Kirkelie and Drapela fought it out in the 880 yard run. Goodwin ran a good mile, while Christensen breezed over the hurdles. L. Glaus sailed to a new pole vault record. Outstanding sprinter was Koepke, who set new records in the 100 and 220 yard dashes and ran on the relay team along with Pracht, Gilbert and Christensen.

The schedule and results this year were:

Lebanon 94 — Sweet Home 17.
 Lebanon 97 $\frac{2}{3}$ — Stayton 25 $\frac{1}{3}$.
 Willamette Valley — Placed 7th with 10 points.
 Lebanon 43 — Albany 79.
 Lebanon 70 $\frac{1}{2}$ — Corvallis 119 $\frac{1}{2}$ — Sweet Home 13.
 Lebanon 91 — Sweet Home 31.
 Lebanon 70 $\frac{1}{2}$ — Jefferson 51 $\frac{1}{2}$.
 Tri-County — Placed third with 35 points.
 District — Placed fourth with 66 $\frac{1}{2}$ points.
 Lebanon 97 — Junction City 33 — Sweet Home 21.

Jerry Koepke, James Sollenberger and Dick Duncan qualified for the state meet.



Back Row: Simi, Beck, Lott, Keen, Andres, Peoples, Baker, Stewart, Clark.
 Second Row: R. Campbell, Sturgeon, Monroe, R. Bean, W. Campbell, Porter, Voss, Trabont, Brown.
 Front Row: M. Bean, Swanson, Copeland, Stolsig, Bartels, Thoma, Spence, Phelps, Klavano.
 Not Shown: Captain Don Hebert, D. Beck.

Baseball

Even though our baseball team did not have a spectacular year, much experience and playing know-how was gained. With few of this year's lettermen graduating, much is expected of next year's squad. Coach Lewis Clark can be credited for the fine job he has done in molding a fighting ball club.

Our pitching staff consisted of Jerry Bartels, a two year letterman at this post; Rodney Bean, veteran from last year who will see two more years of action, and Virgil Sturgeon and Ronald Lott, who both pitched at different times this season, and although this was their first year as hurlers, they showed up very well.

Third base was covered by Don Hebert, Warrior captain, who did a very capable job at this post. Bob Monroe did an excellent job at shortstop, as he played his first year of varsity ball. Second base was played by Stan Porter, who did a very good job besides showing great power at bat. Glenn Spence covered the first sack. Glenn is a returning letterman. Monte Bean, hard hitting senior, was catcher. Left field was played by Bill Andres. Bill is also a returning letterman. Harold Bates, one of last year's first nine, handled center field, and is being considered for the Oregon Shrine all-star game. Bill Baker played right field.

Other reserves who shall be assets to the team in years to come are as follows: Gene Beck, Gene Keen, Johnny Stolsig, Wayne Klavano, Richard Campbell, Dean Beck, Carl Swanson, Robert Phelps and Ralph Voss. Don Thoma, graduating left fielder, played excellent ball at his position. Team managers were Jerry Simi and Gene Stewart.

With a little luck and hard work, these boys should field a powerful ball club next year, as most of them mentioned are to return.

SPONSORS





ANTHONY MOTORS

GARAGE

MACHINE SHOP

COMPLETE OVERHAULING — STEAM CLEANING

IGNITION — TUNEUP — CARBURETION

TRUCK, TRAILER AND CAR BRAKE SERVICE



LEBANON'S HOME-OWNED DEPARTMENT STORE



READY-TO-WEAR — SHOES — DRY GOODS
FOR THE ENTIRE FAMILY

Britton's

FEDERATED STORE — LASTING VALUES



CHILCOTE'S FURNITURE AND APPLIANCES

Lebanon, Oregon — Phone 3831

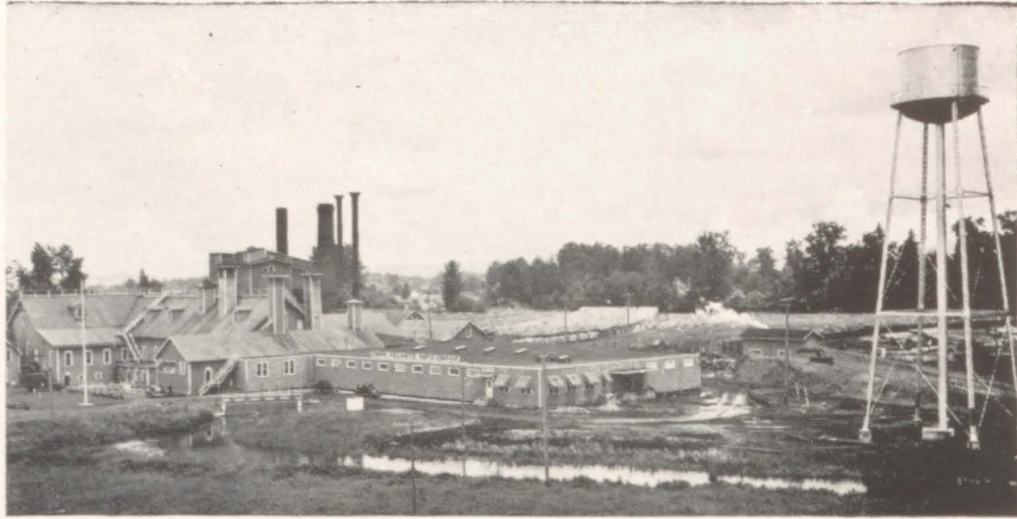
SIMMONS BEDDING — KALAMAZOO RANGES — SPARTON RADIOS

WHIRLPOOL AUTOMATIC AND CONVENTIONAL WASHERS

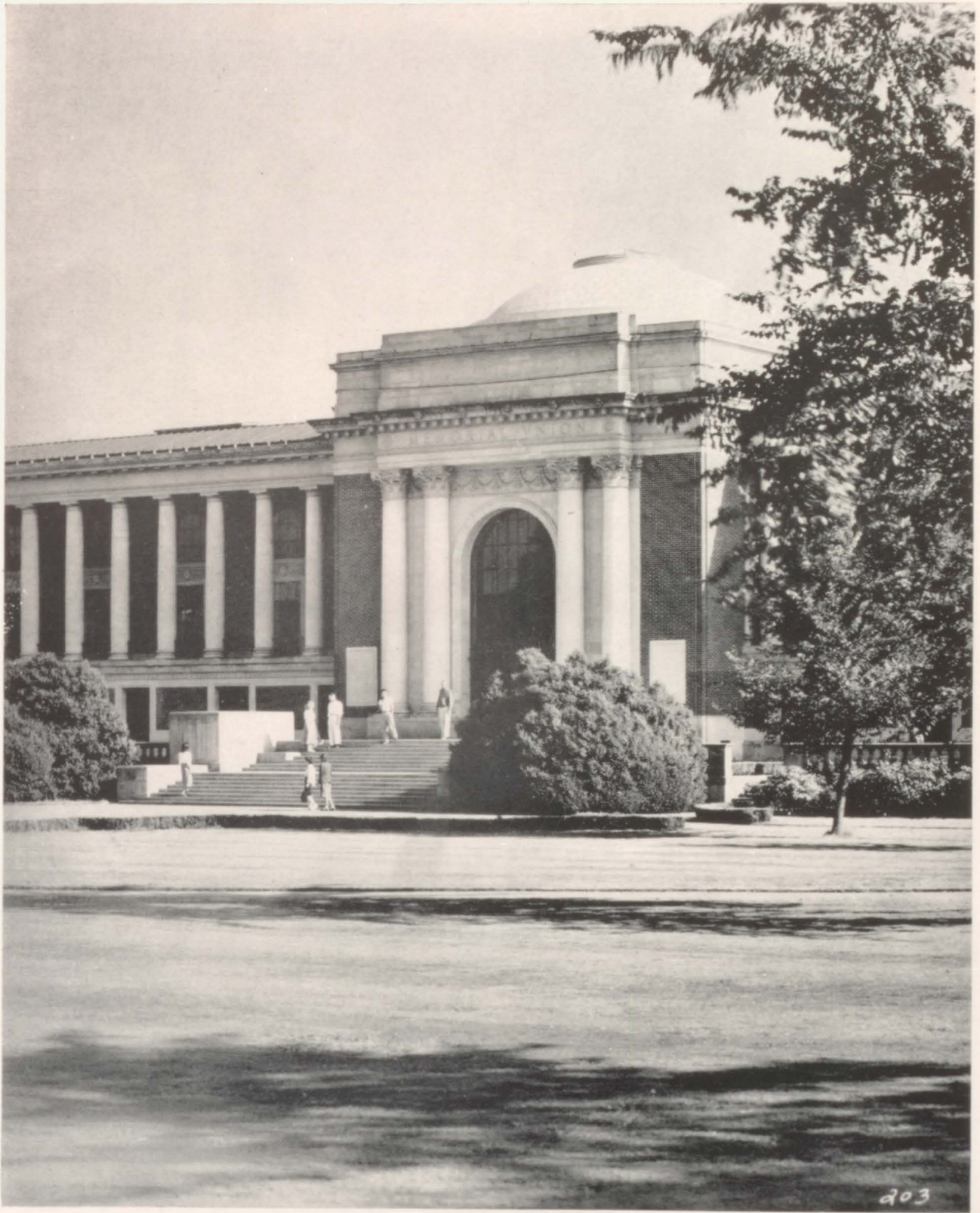
DEEFPREEZE REFRIGERATORS

A STEP AHEAD IN QUALITY — A STEP BEHIND IN PRICE

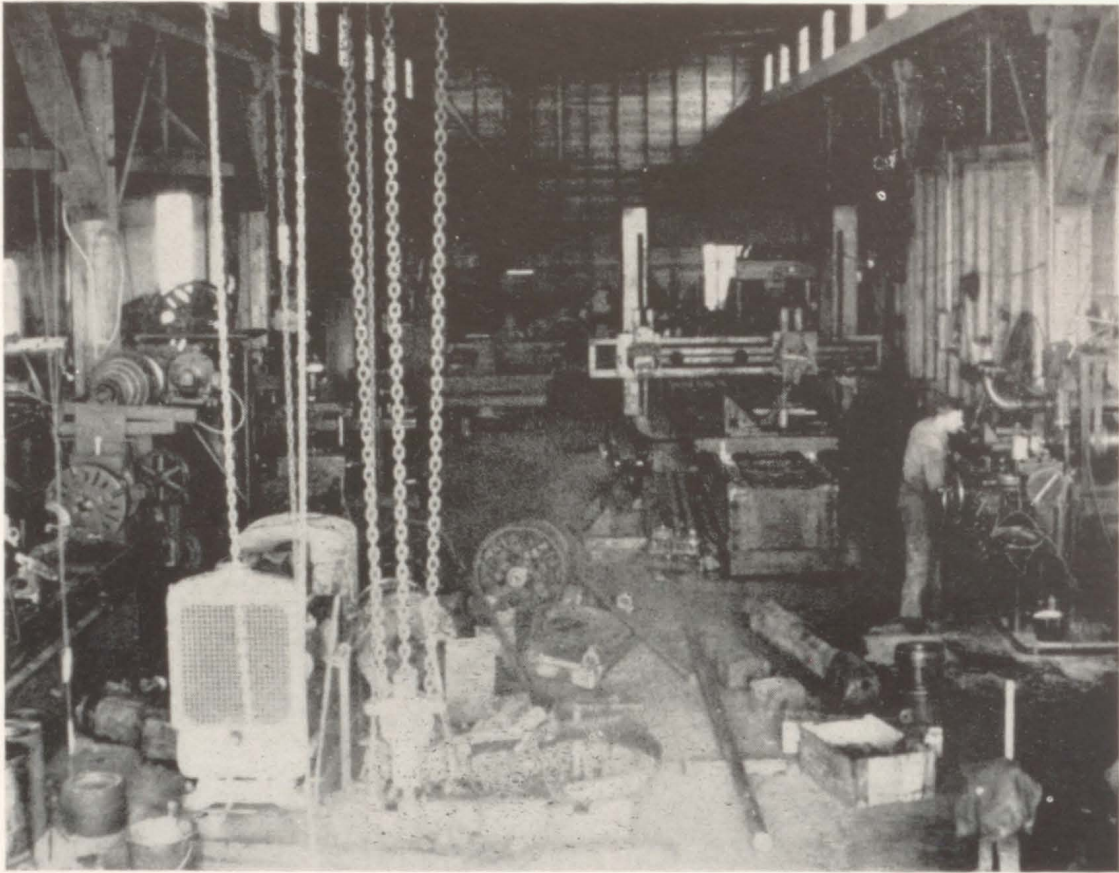




Compliments of
CROWN WILLAMETTE PAPER COMPANY
Division of
CROWN ZELLERBACH CORPORATION



HISE STUDIO
"Your Friends Will Tell You"
Corvallis, Oregon



HOBBS MACHINE WORKS

DESIGNING AND DEVELOPING
TOOLS AND MACHINERY
GENERAL MACHINE WORK, WELDING, METALLIZING

PHONE 3303

LEBANON, OREGON



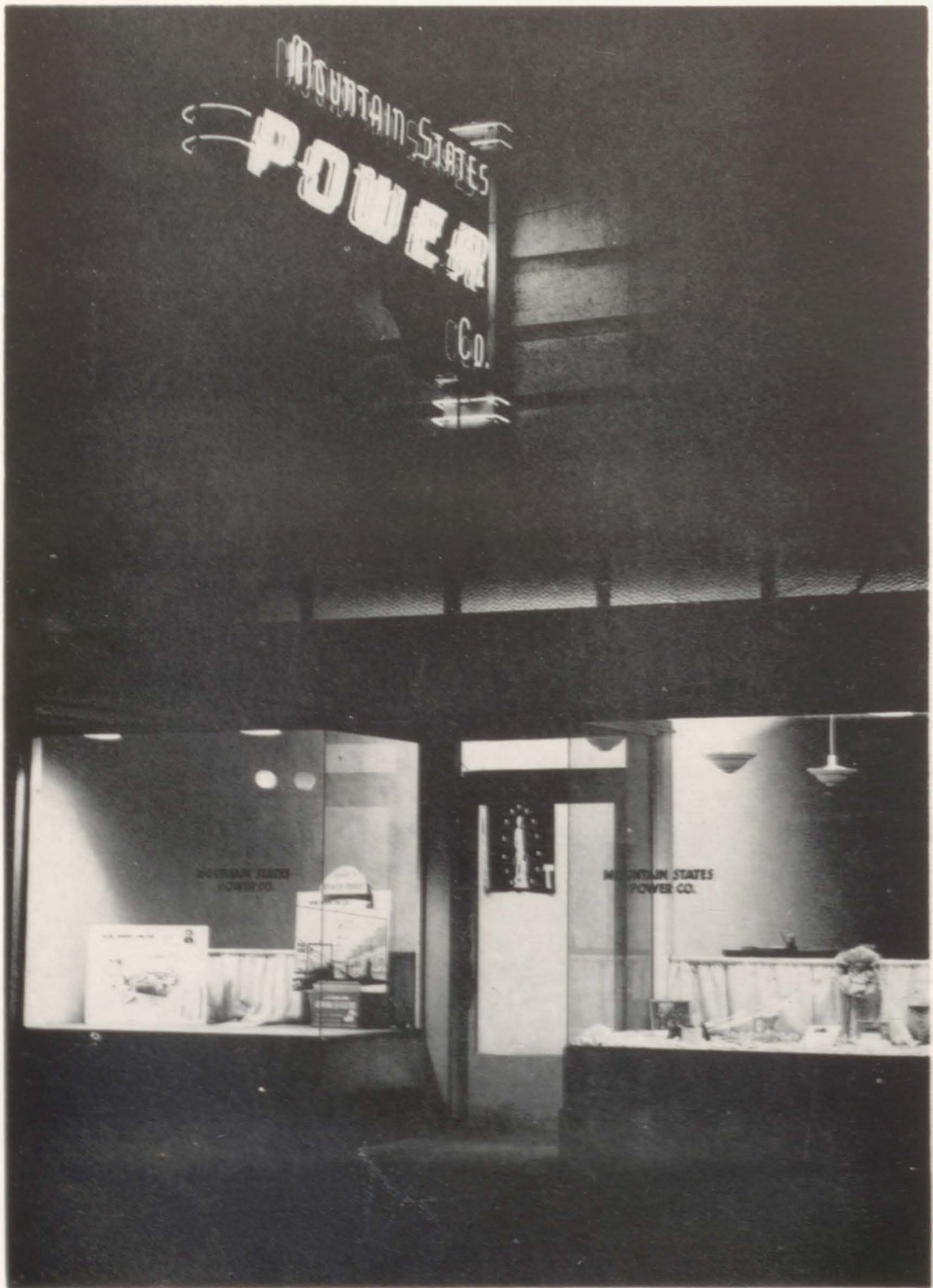
LEBANON'S MOST MODERN DEPARTMENT STORE

Congratulations and Best of Luck

From

PENNEY'S

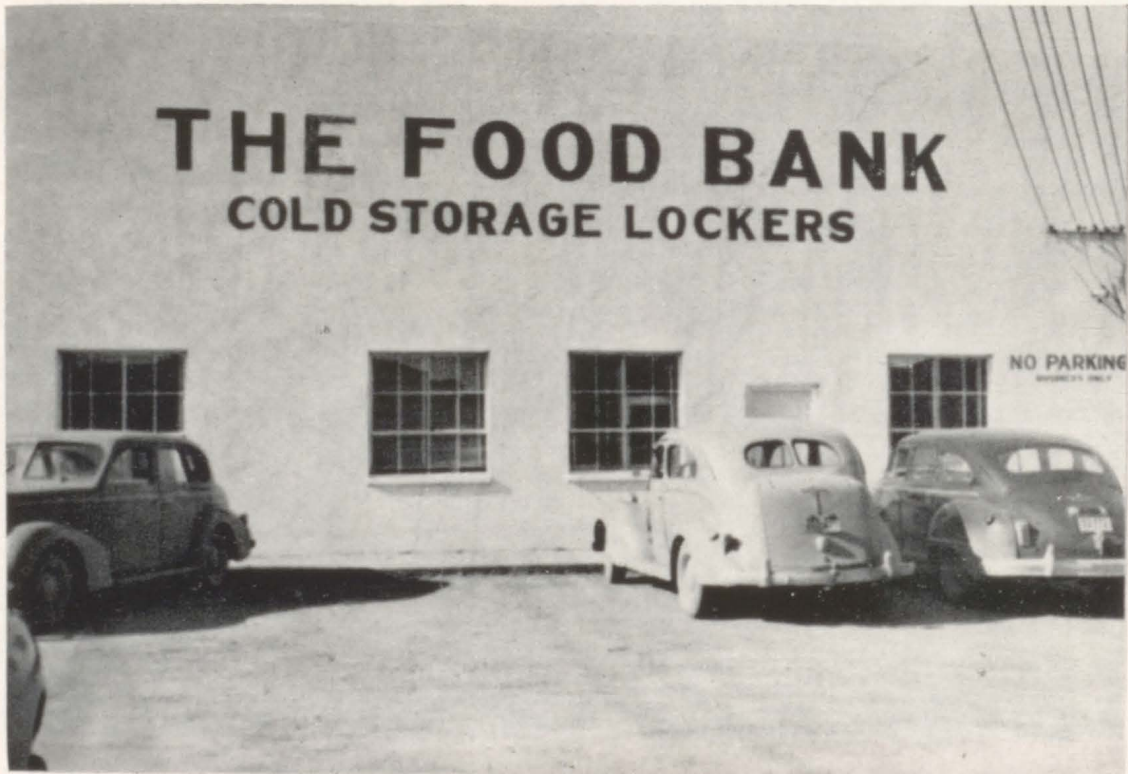
HOME OF
CASH AND CARRY VALUES







BILL TEMPLETON BUICK CO.



THE FOOD BANK

ANDY'S ICE CREAM & JIM'S ELECTRIC

Electrical Contracting
Wire — Supplies

Mixihot Sandwiches and Meals

Phone 1111 1707 S. Main



ASSOCIATED SERVICE STATION

Specialized in Veedol
and Lubrication

Phone 2902 Lebanon

BEN FRANKLIN STORES

5c & 10c — \$1.00 & up

School Supplies — Toilet Articles
Notions — Hardware

772 Main St. Phone 4151



ED BILYEU — TED RODMAN

Complete Insurance
and
Real Estate Service

Phone 5602 535 Park St.



BOB AND JACK'S MARKET
 Wholesale — Retail
 Custom and Commercial Butchering
 Phone 391 Phone 22F11

BOHLE BROS. FURNITURE CO.

Complete Line of
 Furniture, Radios, Appliances
 Phone 5462

836 Main

Lebanon



BROWN'S MOBILGAS SERVICE

Mobilgas and Mobiloil
 Mobilubrication

Make My Telephone Line
 Your Clothes Line!
 Phone 3013
BUBBLING WATER LAUNDRY



All Makes
Used Cars
at
BURGOYNE MOTOR CO.
Phone 3421 Main & Jennings



CAMPUS CLEANERS
Main & Wheeler Phone 3472

It's a good rule to buy at
CARLSONS' ELECTRIC
Phone 5541 824 Main



CASCADE BIKE SHOP
Sales & Service
Phone 5221 175 N. Santiam



COLUMBIA FOOD STORE
 Quality — Variety — Savings
 Phone 351

COX & HAMILTON
 Real Estate Brokers



CRAIG'S DRIVE-IN MARKET
 Phone 2881
 1475 S. Main Lebanon

Always Welcome at —
 "The Smile Center"

DELMAR CLEM



Mens Wear

"Get The Habit"

745 Main

Lebanon



DEN HERDER

Plumbing — Heating — Appliances
Phone 1371 146 W. Sherman

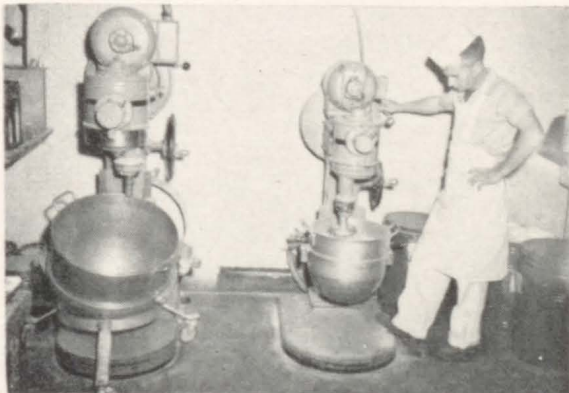


THE DINETTE

American and Chinese Food
Mr. and Mrs. Jack Lott

DOUGHTON'S

Shoes for the Family
660 Main Lebanon, Oregon
Phone 2403



DURLAM'S BAKERY

Phone 592
Main and Ash



DUTCH MILL GROCERY
Groceries — Meats — Vegetables
Friendly, Courteous Service
Is Our Aim

For Your Safety in Your Community
Insure With
EARL S. SAXTON
State Farm Insurance
Fire — Life — Auto
Phone 1603 839 Main



Compliments of

Eggen



Photo

FRUM'S
Good Food to Eat
Swell Friends to Meet



Grace's
FLOWERS



HIRAM GROVES HARDWARE

Paints — Tools — Wallpaper
Woodworking Tools
Linoleum
Sporting Goods
Phone 51

HEWETT'S DRUG STORE

Prescriptions Our Specialty

Phone 1182

Lebanon



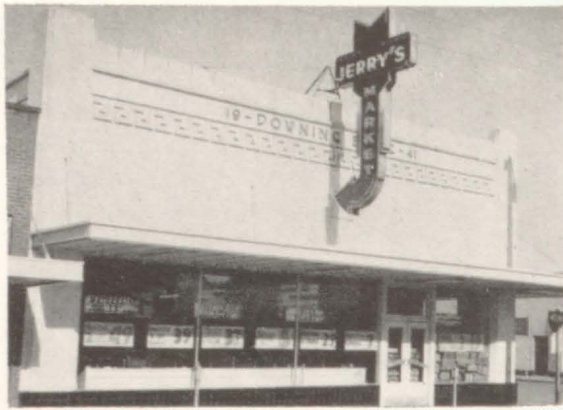
IRISH-WARNER'S SUPER MARKET

Lebanon's Shopping Center

Ice Cream — Lunches
Milk Shakes

960 Main

Lebanon



JERRY'S FOOD MARKET

Quick, Efficient Service

Main Street

Lebanon, Oregon

**JERRY'S
BUSTER BROWN SHOE STORE**

"Complete Line of
School Shoes"

Phone 6371

Lebanon



JOHANNSEN'S DRUG STORE

The Rexall Store

Phone 501

788 Main

Compliments
of
JORDAN'S STUDIO



KEITH RHODES

Insurance

Phone 5411

36 W. Sherman



KELLENBERGER'S

Frigidaire Appliances

Easy Spindrier Washers

846 Main St.

Lebanon

KERR-MILLER DRUG COMPANY

Drugs — Prescriptions

School Supplies

Stationery — Toiletries

Phone 271

Lebanon



KESSEY'S

Corsages Our Speciality

Flowers for All Occasions

Phone 3751

96 E. Sherman



Congratulations
Class of 1949
GEORGE KINGAN

Firestone
STORE

865 Main

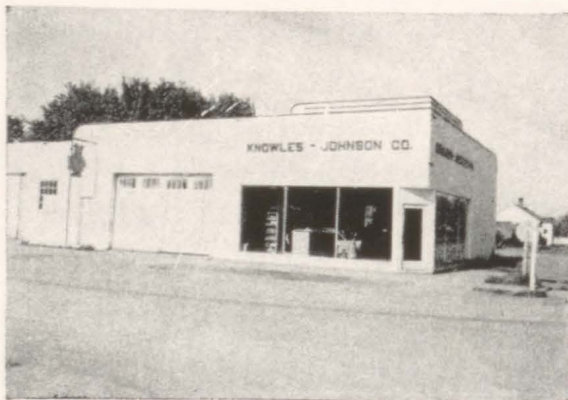
Phone 3841

KIRKPATRICK MOTOR COMPANY

Ford Products

Phone 751

Lebanon



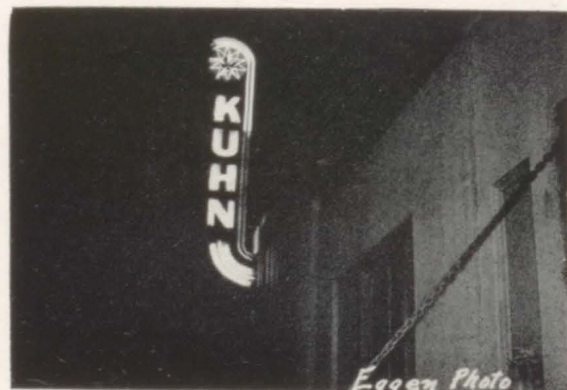
KNOWLES-JOHNSON

Auto Body Complete

Phone 1191

Second & Maple

CONGRATULATIONS,
SENIORS!



Eggen Photo

LEBANON AUTO PARTS

We Handle Auto Parts for
All Makes of Cars

Bert Moersch, Proprietor

Phone 431

Lebanon



LEBANON AUTO SERVICE

Phone 131

Lebanon

LEBANON CAB COMPANY

Taxi — Anywhere — Anytime

24 Hour Service

Phone 951

38 E. Sherman



LEBANON COFFEE SHOP

Try Our
Sandwiches, Lunches, Dinners
We Also Serve Banquets

Mr. & Mrs. W. F. Mickenham
Phone 171



For All Cleaning Needs
 Phone 342
 for the
LEBANON DURACLEANERS
 Rug & Upholstery Cleaning
 Floor Waxing
 Janitorial Service

Electrical Contracting, Motor Repairing
 Power Line Construction

LEBANON ELECTRIC
 Dean McKean

Wire & Supplies — Lighting Fixtures
 Phone 2552 — Res. 2671

66 E. Sherman Lebanon



LEBANON EQUIPMENT CO.

See Paul

South Main Lebanon

Phone 5031

LEBANON FOOD MARKET

Low Prices Every Day
 At I.G.A.

Leo Johnson Phone 651



LEBANON FURNITURE STORE

Phone 2421

Park & Ash



LEBANON HOTEL

Albert F. Wilson, Prop.

Lebanon, Oregon

LEBANON LAUNDRY

Quality That Will Please

Phone 2461

1111 South Main



LEBANON LEADING FLORISTS

Flowers For All Occasions

All Hours

Phone 221

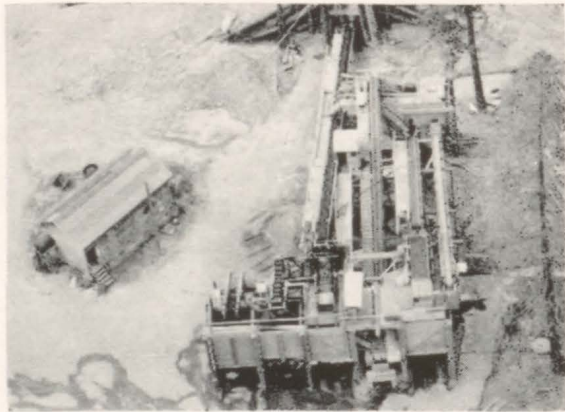


LEBANON MOTOR CENTER
Car, Truck & Tractor Repairing
Brake Shoe Exchange — Welding
Gene & Amel Davis
Phone 1901 Third & Sherman

LEBANON PAINT STORE

Painting Supplies
and
Painting Contracting

Phone 3752 65 E. Grant



LEBANON SAND & GRAVEL CO.

Morse Bros.

Ready-Mix Concrete

Phone 4141

LEBANON SKATING RINK

W. B. Holbrook

Phone 1263

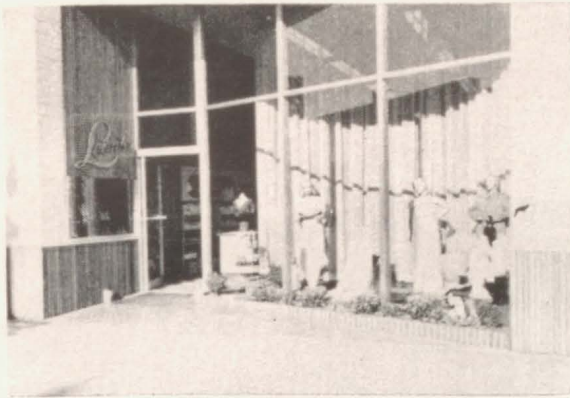


LEBANON 5 & 10 STORE

Candy — Cosmetics
Greeting Cards — Gifts
Sporting Goods — Toys

744 Main

Phone 3211



LEON'S

Beautiful Shoes
Joyce — Johansen
DeLiso — Cobblers

Phone 642

LISETTE'S BEAUTY SHOP

Complete Beauty Service

Lisette Wells

Phone 5382

537 Park St.



LONG-BELL LUMBER COMPANY

"Let The Building Bug Bite You"

Complete Line of Building Materials
Paint — Hardware

Phone 1151



MAYES' BEAUTY SHOP

Only Your Professional Beautician
Gives You the "Right Look"

Central Lane

Phone 282

McCOWN'S ICE CREAM

Ice Cream Sold Where
Quality Counts

"The Cream Supreme"

Lebanon

Park St.



McFERREN'S MARKET

Located in
Pine Lodge Grocery
and
Fenner's Food Store

MESSAL'S SERVICE STATION

24 Hour Service

Phone 2882

Res. 6574



JOHANNSEN'S MODERN CLEANERS

Prompt, Efficient Service

868 Main Street



MOTY & VAN-DYKE, INC.

Automotive & Industrial Supplies

Phone 3331

115 Sherman

NU-WAY CLEANERS

Expert Service
and
Quality Workmanship



PENWELL TEXACO SERVICE STATION

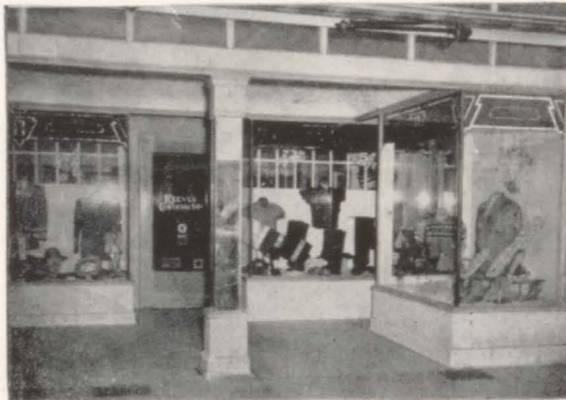
211 N. Main

Lebanon



Compliments
of
PETERSON'S BARBER SHOP

PINE LODGE GROCERY
Open 7 Days a Week



REEVES CLOTHING
Men's and Boys' Clothing
and Shoes
Phone 941 712 Main

ROGER'S SHOES & APPAREL
Shoes and Sportswear
for the
Modern Miss

Phone 3942 Lebanon



Your Local Chevrolet Dealer
For the Past 25 Years

SCOTT-CHRISMAN MOTOR CO.

Chevrolet Sales & Service

Phone 1791



Exclusive But Not Expensive

SHAFFERS READY-TO-WEAR

541 Park St.

Lebanon

SMITH'S SHELL SERVICE

Night and Day Storage

Washing

Phone 1074



SHIMANEK'S BAKERY

Bakers of the World's Largest
Strawberry Shortcake

Phone 571

Lebanon



"better
Advertising Ideas

pay better dividends

SIDNEY H. PEAT

Signs

Advertising Art

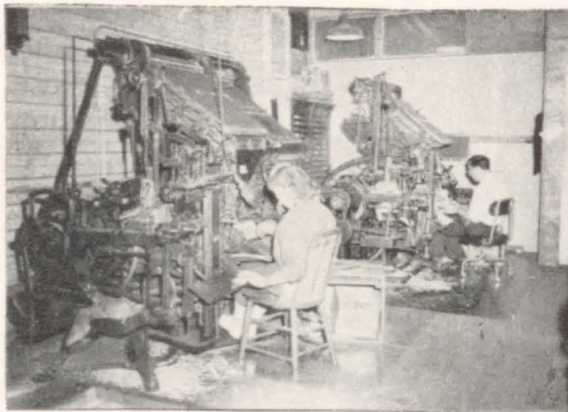
31 N. Santiam Hwy.

SNACK SHOP

Across from High School

Arden's Flavor Fresh Ice Cream

Fountain Specials—Tasty Sandwiches



THE LEBANON EXPRESS

"Your Home Newspaper"

VAN DUYN'S GROCERY STORE

South of Lebanon



VAN'S PRINT SHOP
Stationers and Printers
585 Main Street



VERN REEVES
Insurance
Telephone 41
565 Main St. Lebanon

WALKER'S
MUSIC & APPLIANCE STORE
Musical Instruments — Pianos
Records — Sheet Music
Appliances

55 E. Grant Phone 3883



WELLS REAL ESTATE
Farms — Homes — Business Property
946 Main St. Lebanon

PROFESSIONAL DIRECTORY

DR. DAVID E. REID, Osteopathic Physician

DR. F. P. GIROD, Physician & Surgeon

DR. GEORGE CRAIN, Optometrist

DR. H. J. WHELAN, Dentist

DRS. IRVINE & HERRON
Physicians & Surgeons

DR. J. G. GILL, Dentist

DR. J. R. ELRUM, Dentist

KENNETH WILSHIRE, Attorney-at-Law

DR. M. O. PERKINS, Physician & Surgeon

DRS. SAHLSTROM & PACE, Optometrists

MORLEY & THOMAS, Attorneys-at-Law

DR. C. A. WOODS, Dentist

CLARK'S FURNITURE STORE

DOT & DASH GROCERY STORE

STANDARD STATIONS INC. 999
Ed Calahan, Mgr.

EICHNER'S FEED STORE

FIELD'S CASH GROCERY

FRANCIS' GIFT SHOP

GILSON'S HARDWARE

HAROLD'S BARBER SHOP

JOE'S BARBER SHOP

LANDSTROM'S JEWELRY STORE

LARSEN'S JACK 'N JILL

RALPH'S FOUNTAIN

ROBERTSON'S GROCERY

SANTIAM HARDWARE

SANTIAM SPORTING GOODS

VALLEY FEED & SEED

VOGEL'S JEWELRY

WARDEN'S INSURANCE

WESTERN STORES

ZIMMERMAN'S GROCERY



ATHRYN WILCOX



Joan-Ber-Jean
Carlson

20-5 30TT



20-5 SE A 23-K-O



James

Krapes



Gertirude

hewis



Barbara

Pearce

SEADY DAVIS



THURSDAY



THE 20-5 30TT



DORIS GROVES

